

Delivering Primary Source Materials Via the World Wide Web:
The American Memory Project
Iowa Educational Media Association 1999 Conference
March 19, 1999

An Overview of the Traveling Culture Project at The University of Iowa Libraries

Project Team

Carol Ann Hughes, Head, Information, Research, and Instructional Services (Principal Investigator)

Richard Kolbet, Special Collections Librarian (Project Archivist)

Paul A. Soderdahl, Team Leader, Information Arcade (Project Technical Specialist)

Sid Huttner, Head, Special Collections

Timothy Shipe, Bibliographer

Philip Brodd, Departmental Information Specialist, Information Systems Support Team

Annadora Khan, Library Assistant, Information Arcade

Jennifer Lawrence-Gentry, Consultant, Information Arcade

Tressa Kleinendorst, Assistant, Information Arcade

traveling culture

circuit chautauqua in the twentieth century

<http://sdrc.lib.uiowa.edu/traveling-culture>

Delivering Primary Source Materials Via the World Wide Web:
The American Memory Project
Iowa Educational Media Association 1999 Conference
March 19, 1999

Description of the Collection

**Chautauqua
Collection
(648 linear ft)
1169 containers**

**Talent
(132 ft)**

**Business
Records
(183 ft)**

**Cities
(195 ft)**



**Journals
(12 ft)**

**Employees
(126 ft)**

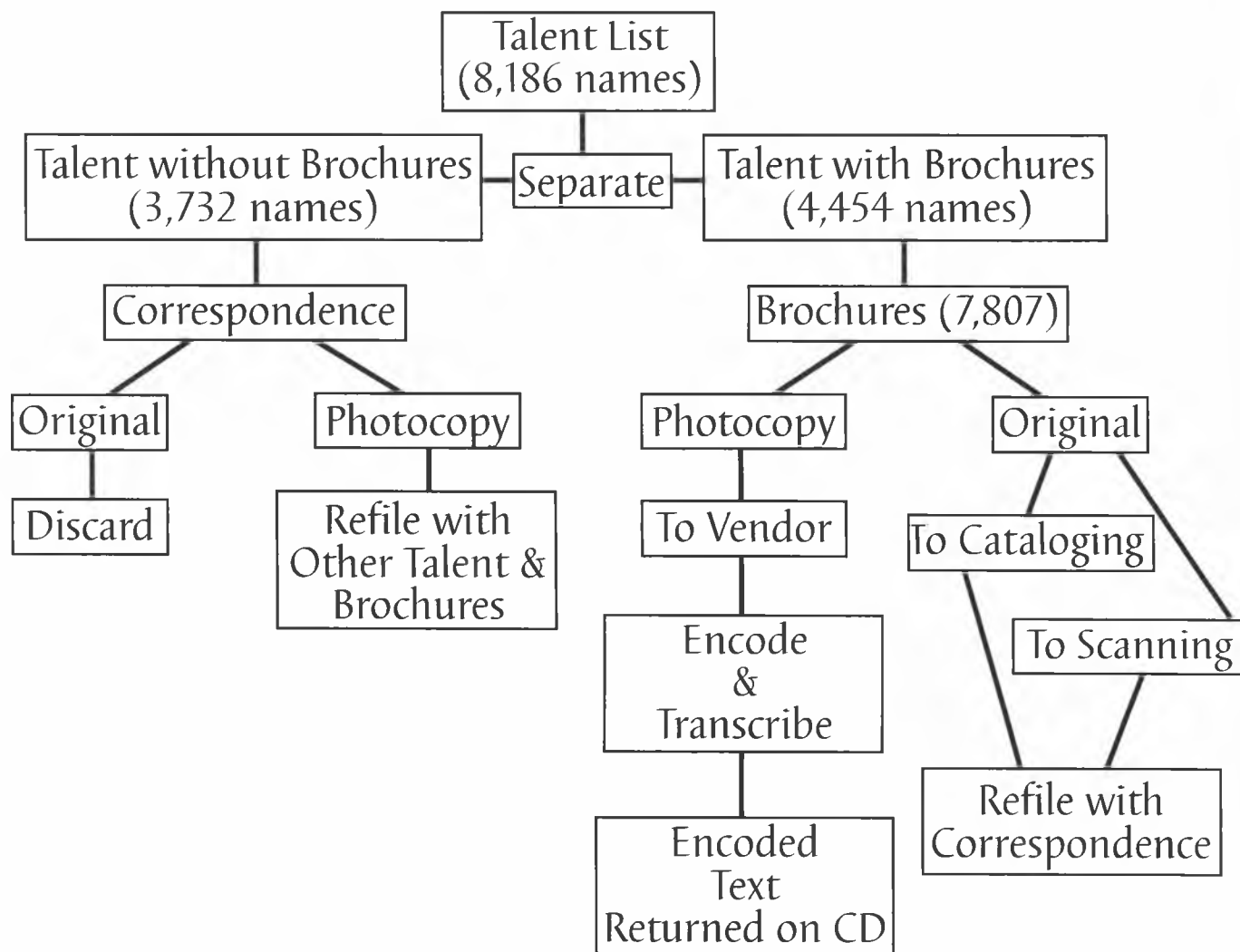
**Photographs
(5 ft)**

**Miscellaneous
(5 ft)**

traveling culture
circuit chautauqua in the twentieth century
<http://sdr.lib.uiowa.edu/traveling-culture>

Delivering Primary Source Materials Via the World Wide Web:
The American Memory Project
Iowa Educational Media Association 1999 Conference
March 19, 1999

The Workflow



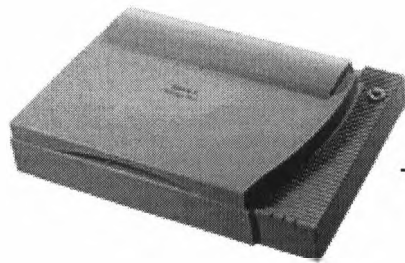
traveling culture.

circuit chautauqua in the twentieth century

<http://sdrc.lib.uiowa.edu/traveling-culture>

Delivering Primary Source Materials Via the World Wide Web:
The American Memory Project
Iowa Educational Media Association 1999 Conference
March 19, 1999

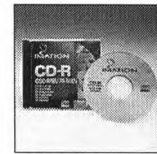
The Scanned Image



Original image scanned
at 600 dpi, 32-bit color



ARCHIVAL TIFF
600 dpi, 32-bit color



ARCHIVAL TIFF
pressed to CD-R
and shelved



WORKING TEMPORARY
300 dpi, 32-bit color



PDF
300 dpi, 1-bit B/W



JPG
150 dpi, 32-bit color



GIF
75 dpi, 8-bit color



THUMBNAIL
6 dpi, 8-bit color

Downtranslations automated
with PhotoScripT

Delivering Primary Source Materials Via the World Wide Web: The American Memory Project

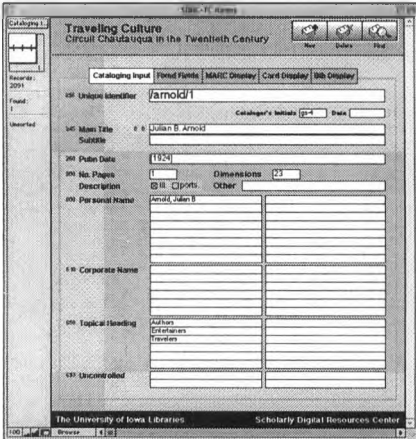
Iowa Educational Media Association 1999 Conference

March 19, 1999

Intellectual Access

CATALOGING INPUT

In home-brewed FileMaker database



MARC RECORD

Search bibliographic information; URL listed in 856 field

```

Template: TC ; Bk Created: 08-10-98 Updated: 08-17-98
Leader: 00529nam 2200157 a 4500
005: 19980817111852.0
008: 980810s1910 xxuac 000 0 eng d

Titl Main 245 00 a Julian B. Arnold :
SubT b entertainer and lecturer.
Pubn Date 260 c [1925?]
Desc Extn 300 a 3 p. :
Othr b ill., ports. ;
Dimn c 28 cm.
Subj Topc 650 0 a Entertainers.
Subj Topc 650 0 a Lecturers.
Subj Topc 650 0 a Authors.
Subj Topc 650 0 a Travelers.
Subj Name 600 10 a Arnold, Julian B.
F773 SubT 773 0 t Redpath Chautauqua Collection.
Locn Locn 852 1 a University of Iowa Libraries
Coll b Special Collections Department
SubE e Iowa City, IA 52242-1420
Elec URLo 856 4 u http://sdrclib.lib.uiowa.edu/traveling-culture/chaul/tp/arnold/4.html
    
```

SGML DOCUMENT

Search bibliographic information in TEI header
or search full text of document

```

<!DOCTYPE TEI.2 PUBLIC "-//TEI//DTD TEI Lite 1.0//EN" "TEILITE.DTD">
<TEI.2><TEIHEADER>
<FILEDESC><TITLESTMT>
<TITLE>Julian B. Arnold: Electronic Version.</TITLE>
</TITLESTMT>
<EXTENT>one electronic file</EXTENT>
<PUBLICATIONSTMT>
<PUBLISHER>Scholarly Digital Resource Center, The University of Iowa Libraries</PUBLISHER>
<PUBPLACE>Iowa City, IA 52242-1420</PUBPLACE>
<IDNO>http://sdrclib.lib.uiowa.edu/traveling-culture/chaul/sgm/arnold/4.sgm</IDNO>
<DATE>1998</DATE>
</PUBLICATIONSTMT>
<SOURCEDESC>
<BIBL>
<TITLE>Julian B. Arnold : entertainer and lecturer.</TITLE>
<DATE>[1925?]</DATE>
<EXTENT>3 p.</EXTENT>
</BIBL>
</SOURCEDESC>
</FILEDESC>
<PROFILEDESC><LANGUSAGE><LANGUAGE ID="eng"></LANGUAGE></LANGUSAGE></PROFILEDESC>
</TEIHEADER>

<TEXT>
<BODY>

<P>JULIAN B. ARNOLD</P>

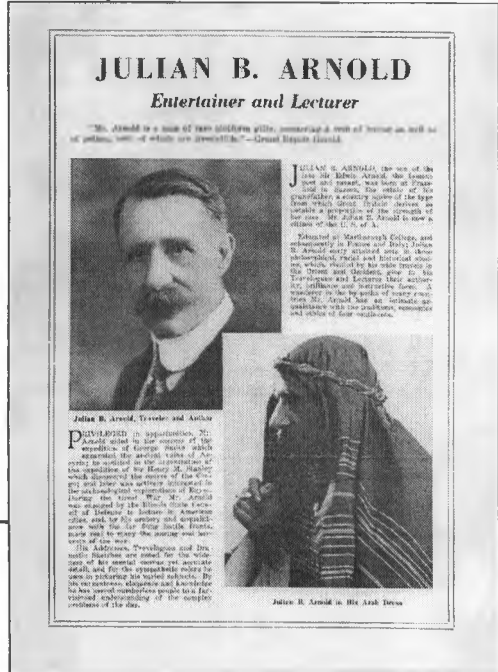
<P>Entertainer and Lecturer</P>

<P>"Mr. Arnold is a man of rare platform gifts, possessing a vein of humor as well as of pathos, both of which are irresistible."-- Grand Rapids Herald.</P>

<P>[PICTURE]</P>

<P>Julian B. Arnold, Traveler and Author</P>

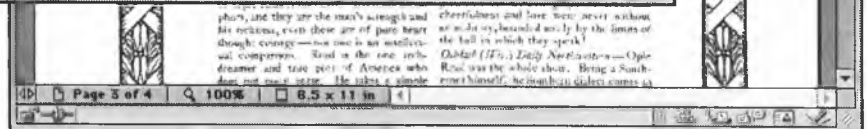
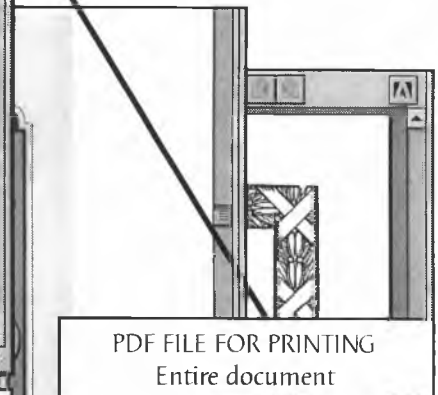
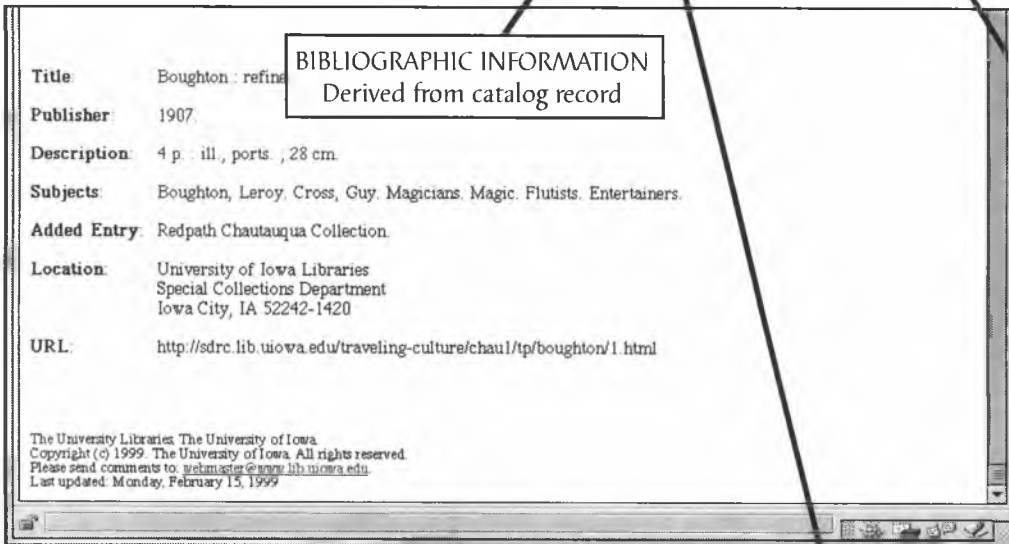
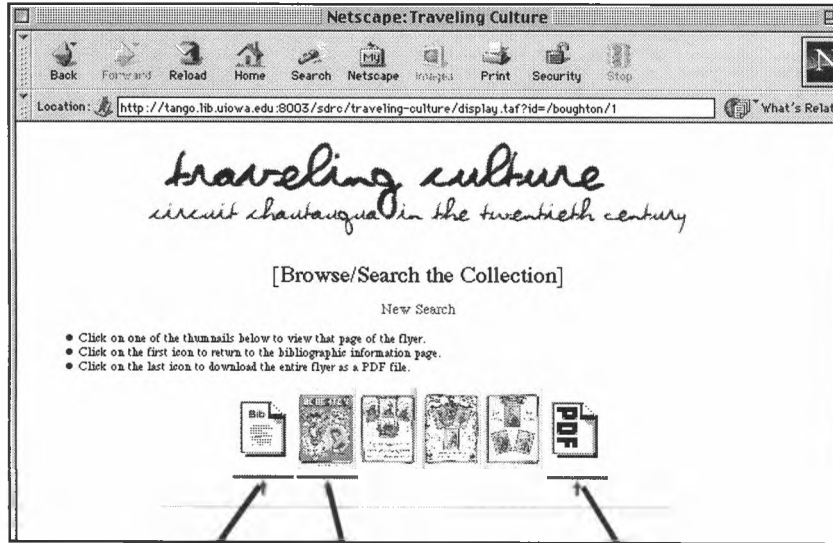
<P>Privileged in opportunities, Mr. Arnold aided in the success of the expedition of George Smith which excavated the ancient ruins of Assyria; he assisted in the organization of the expedition of Sir Henry M. Stanley which discovered the course of the Congo; and later was actively interested in the archaeological explorations of Egypt. During the Great War Mr. Arnold was engaged by the Illinois State Council of Defense to
    
```



*traveling culture
circuit chautauqua in the twentieth century*
<http://sdrclib.lib.uiowa.edu/traveling-culture>

Delivering Primary Source Materials Via the World Wide Web:
The American Memory Project
Iowa Educational Media Association 1999 Conference
March 19, 1999

The Navigational Interface



traveling culture
circuit chautauqua in the twentieth century
<http://sdrc.lib.uiowa.edu/traveling-culture>

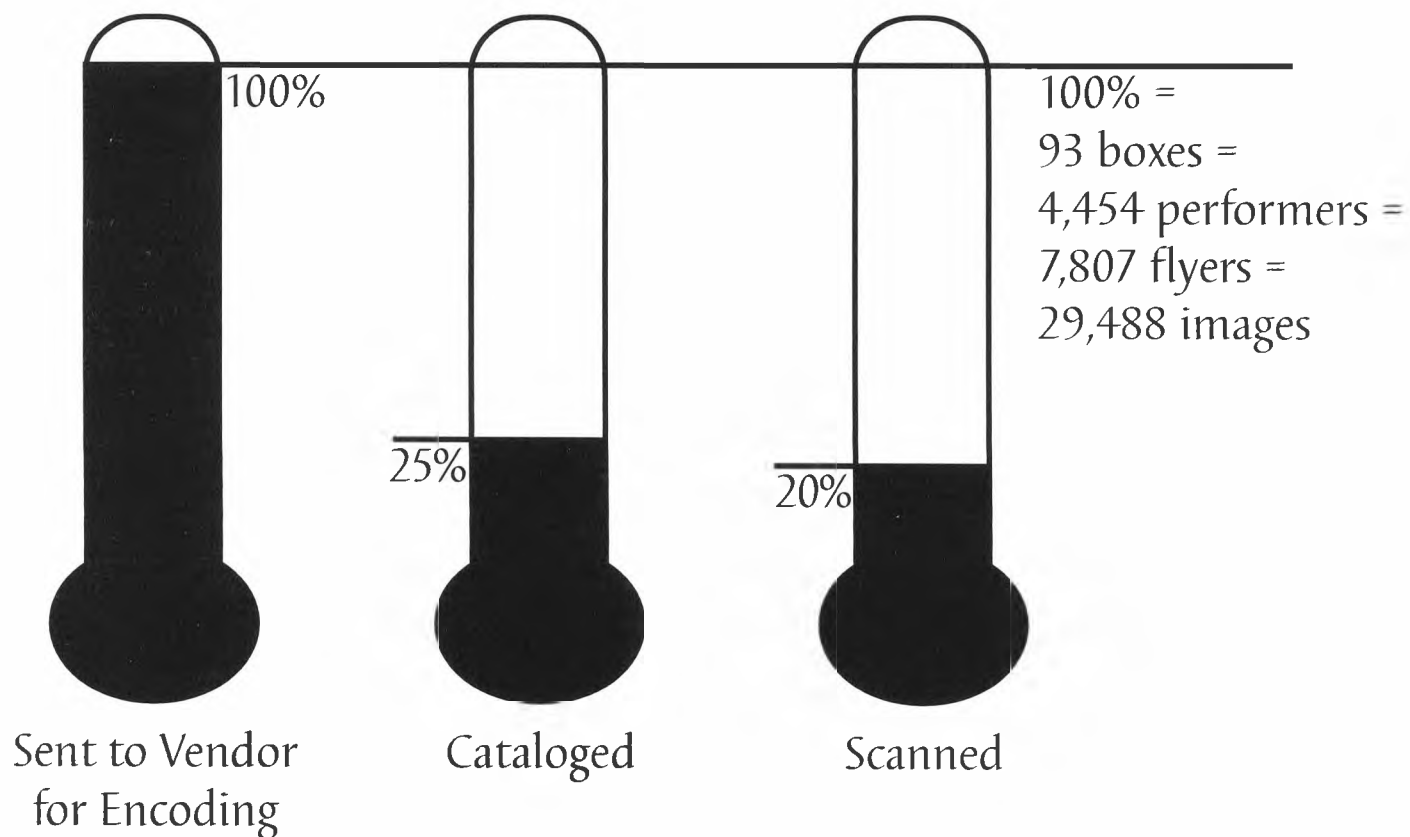
Delivering Primary Source Materials Via the World Wide Web:

The American Memory Project

Iowa Educational Media Association 1999 Conference

March 19, 1999

Status Report



traveling culture

circuit chautauqua in the twentieth century

<http://sdr.lib.uiowa.edu/traveling-culture>

Delivering Primary Source Materials Via the World Wide Web:
The American Memory Project
Iowa Educational Media Association 1999 Conference
March 19, 1999

Important URLs

Traveling Culture: Circuit Chautauqua in the Twentieth Century Home:Page
<http://sdrclib.uiowa.edu/traveling-culture>

The University of Iowa Libraries Scholarly Digital Resources Center (SDRC) Home Page
<http://sdrclib.uiowa.edu>

American Memory Home Page:
<http://memory.loc.gov>

American Memory Learning Page
<http://memory.loc.gov/ammem/ndlpedu>

For More Information
Carol Ann Hughes (Principal Investigator)
phone: (319) 335-5489
e-mail: carol-hughes@uiowa.edu

traveling culture
circuit chautauqua in the twentieth century
<http://sdrclib.uiowa.edu/traveling-culture>