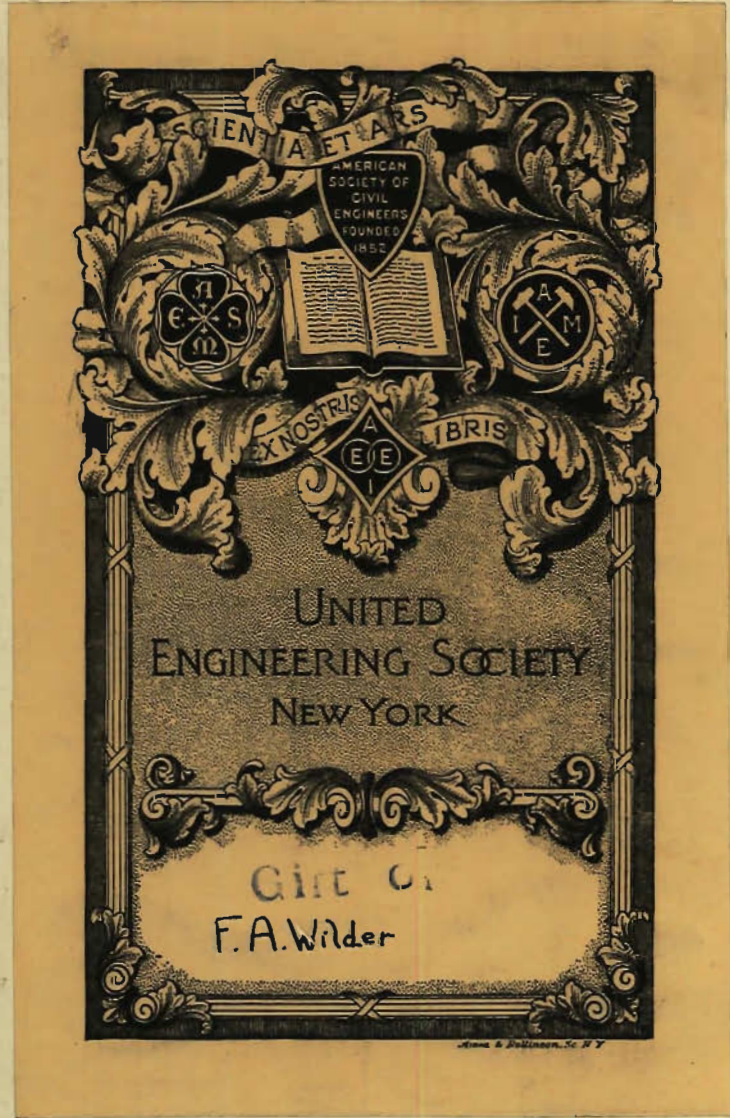


The University of Iowa Libraries



IOWA GEOLOGICAL SURVEY.

VOLUME XXVIII

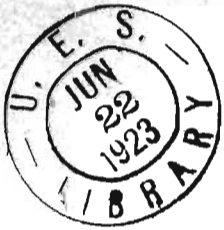
Annual Reports, 1917 and 1918

with

Accompanying Papers

GEORGE F. KAY, Ph. D., State Geologist
JAMES H. LEES, Ph. D., Assistant State Geologist

Published by
THE STATE OF IOWA
Des Moines



557.77
I9r5

Geology

v. 28

1917-18

cop. 4

Geological Survey Organization

GEOLOGICAL BOARD

HIS EXCELLENCY, W. L. HARDING.....GOVERNOR OF IOWA
 HON. FRANK S. SHAW.....AUDITOR OF STATE
 DR. WALTER A. JESSUP.....PRESIDENT STATE UNIVERSITY
 DR. RAYMOND A. PEARSON.....PRESIDENT IOWA STATE COLLEGE
 PROFESSOR LUTHER S. ROSS.....PRESIDENT IOWA ACADEMY OF SCIENCE

ADMINISTRATIVE OFFICERS

GEORGE F. KAY.....STATE GEOLOGIST
 JAMES H. LEES.....ASST. STATE GEOLOGIST
 NELLIE E. NEWMAN.....SECRETARY

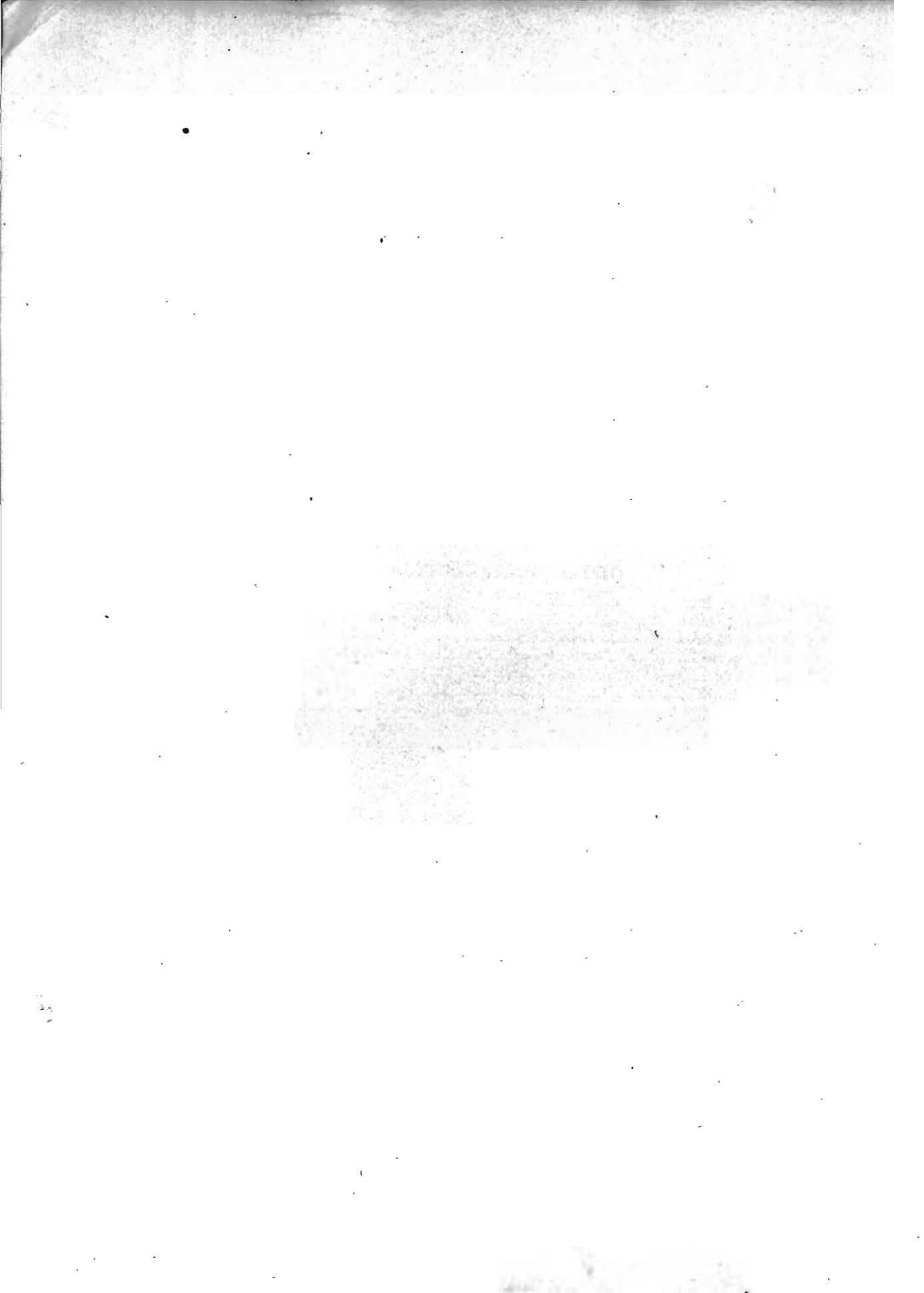
GEOLOGICAL SECTION

GEORGE F. KAY.....PLEISTOCENE GEOLOGY
 JAMES H. LEES.....STRATIGRAPHIC AND AREAL GEOLOGY
 WM. H. NORTON.....UNDERGROUND WATERS
 S. W. BEYER.....ECONOMIC GEOLOGY, CLAYS
 B. SHIMEK.....AREAL GEOLOGY
 F. A. WILDER.....ECONOMIC GEOLOGY, GYPSUM
 JOHN L. TILTON.....STRATIGRAPHIC GEOLOGY
 SIDNEY L. GALPIN.....ECONOMIC GEOLOGY, CLAYS
 F. M. VAN TUYL.....STRATIGRAPHIC GEOLOGY
 WALTER H. SCHOEWE.....AREAL GEOLOGY
 J. E. CARMAN.....AREAL GEOLOGY
 A. O. THOMAS.....STRATIGRAPHIC GEOLOGY
 W. V. KNOLL.....AREAL GEOLOGY
 JOHN E. SMITH.....ECONOMIC GEOLOGY, CLAYS
 ED. RODDEWIG.....CHEMIST, CLAYS
 A. E. JENNINGS.....CHEMIST, GYPSUM
 J. N. PEARCE.....CHEMIST, PLEISTOCENE CLAYS
 DAYTON STONER.....BIOLOGIST, RODENTS

WATER GAGING SECTION

R. H. BOLSTER.....HYDROGRAPHIC ENGINEER
 C. HERLOFSON.....DISTRICT ENGINEER

copy of F. A. Wilder



CONTENTS

	PAGE
LETTER OF TRANSMITTAL, GEORGE F. KAY.....	1
MINERAL PRODUCTION IN IOWA IN 1917 AND 1918, JAMES H. LEES.....	3
GYPSUM: ITS OCCURRENCE, ORIGIN, TECHNOLOGY AND USES, FRANK A. WILDER	47
Preface	61
Chapter I, Physical and Chemical Properties of Gypsum.....	63
Chapter II, Important Deposits of Gypsum in the United States and Foreign Countries	79
Chapter III, Origin of Gypsum and Anhydrite	110
Chapter IV, General Descriptions of the Iowa Gypsum Fields	130
Chapter V, Stratigraphy of the Iowa Gypsum Areas	136
Chapter VI, History of the Gypsum Industry	185
Chapter VII, Physical and Chemical Characteristics of Iowa Gypsum	200
Chapter VIII, Technology of Gypsum and Gypsum Plaster	211
Chapter IX, Gypsum in Portland Cement	246
Chapter X, Gypsum in Agriculture	248
Chapter XI, Other Uses for Raw Gypsum	270
Chapter XII, Chemical Characteristics of Calcined Gypsum	273
Chapter XIII, Physical Properties of Calcined Gypsum	279
Chapter XIV, Uses of Calcined Gypsum	304
Chapter XV, Composition and Properties of Gypsum Plasters	308
Chapter XVI, Gypsum Blocks for Floors, Walls and Roofs	322
Chapter XVII, Gypsum Plaster Board and Wall Board	329
Chapter XVIII, Structural Gypsum	342
Chapter XIX, Hydraulic Gypsum and Keene's Cement	354
Chapter XX, Retarders and Accelerators	370
Chapter XXI, Hardening and Coloring of Gypsum and Calcined Gypsum	373
Chapter XXII, Statistics	376
Appendix I, Results of Testing Gypsum Products	383
Appendix II, Microscopic Examination of Gypsum	392
Appendix III, German Methods of Testing Gypsum	400
Appendix IV, Measurement of Time of Set of Calcined Gypsum	407
Appendix V, Factors Influencing Time of Set of Calcined Gypsum	419
Appendix VI, Gypsum Composition Slab Construction for Roofs and Floors	426
Appendix VII, Emley Patent for Plastic Gypsum	449
Appendix VIII, Design of Reinforced Gypsum Beams	454
Appendix IX, Gypsum Companies in United States, Mexico and Canada, 1921	468
Bibliography	473
Index	537



LIST OF ILLUSTRATIONS

PLATES	PAGE
I. Topographic and geologic map of Fort Dodge Region.....in Pocket	
II. Selenite Crystals from Centerville	69
III. Map showing location of gypsum deposits and mills in the United States	80
IV. Map showing location of gypsum bearing deposits of Nova Scotia and New Brunswick	99
V. Gypsum near Des Moines river	151
VI. Cross sections along Des Moines valley and Soldier and Lizard creeks	176
VII. Quarry of Iowa Plaster Company	197
VIII. Banded structure of Fort Dodge gypsum	203
IX. Flow sheet of a typical gypsum mill	220
X. Raymond roller mill	221
XI. Cummer calciner, side elevation	238
XII. Diagram showing fuel and power consumption in Gypsum industry, 1916 and 1917	245
XIII. Loading a gypsum roof for tests	447

FIGURES	PAGE
1. Selenite crystals	66
2. Diagrams of gypsum crystals	67
3. Selenite crystals imbedded in gypsum	68
4. Satin spar, or fibrous gypsum	71
5. Satin spar, with clay inclusions	71
6. Gypsum quarry at Krölpa, Germany	103
7. Sketch showing precipitation of salts from sea water	113
8. Map of Iowa showing gypsum beds	131
9. Airplane view of the Soldier creek valley, Fort Dodge	137
10. Shales and sandstones near lower viaduct over Soldier creek, Fort Dodge	139
11. Gypsum on Soldier creek, Fort Dodge	141
12. Gypsum at the Vincent Clay Pit, Shady Oak	150
13. Conglomerate at base of Fort Dodge beds	169
14. Keyes' section across the gypsum area	174
15. Pyramid of Cheops	185
16. Egyptian calcining oven	186
17. Lower mill of the Iowa Plaster Association	187
18. The Blandon mill	188
19. The Cardiff mill, the first mill on the prairie	189
20. The Plymouth mill	190
21. American Cement Plaster Company Mill	191
22. The Wasem Mill	192
23. The Iowana Mill	193
24. The U. S. Gypsum Co. Mill	195
25. The Centerville Mill	199
26. Interior of the American mine	200
27. House in Fort Dodge built of gypsum	201
28. Domes in Gypsum Hollow	202
29. Solution in gypsum, Vincent pit	205
30. View in Centerville mine	209

LIST OF ILLUSTRATIONS

VII

FIGURES	PAGE
31. View in Plymouth mine	212
32. Ehrsam jaw crusher	213
33. Cracker used in breaking gypsum	214
34. Burr mill at Centerville mill	216
35. Vertical emery mill	217
36. Disintegrator, or hammer mill	217
37. Fineness tests of 1922	226
38. Effect of grinding on setting time and rise in temperature	227
39. Kettle and section of bottom	228
40. Kettles at Centerville	229
41. Ehrsam kettle setting	230
42. Temperature chart	233
43. Cross section of calcining mill	235
44. Cummer calciner, end view	239
45. Ehrsam mixer	242
46. Bates packer	243
47. Effect of gypsum on alfalfa in Oregon	260
48. Root system of alfalfa	263
49. Clover with gypsum dressing	264
50. Pot culture showing effect of sulphates on plants	266
51. Temperature curve during calcining	275
52. Vicat needle	281
53. Southard viscosimeter	284
54. Curve of setting time	288
55. Temperature progress in gypsum coating of pillar	292
56. Temperature progress in gravel concrete	293
57. Diagram of briquette	294
58. Gang mold	295
59. Apparatus for expansion tests	299
60. Expansion curve	301
61. Tensile strength, mixture of gypsum and Portland cement	302
62. Diagram of block machine	324
63. Gypsum blocks as fire proofing	325
64. Sawing a four inch block for furring	328
65. Penetration by gypsum in plaster board	331
66. Adhesion of plaster board	332
67. Putting plaster board on the wall	334
68. Plaster board and coatings	336
69. Plaster board ceilings, Maywood hospital	338
70. Section of wall board	339
71. Effect of hydrated lime on compressive strength	344
72. Reinforcement in the Hammerstein theatre	348
73. Making precast gypsum roof tile	351
74. Laying precast tile on purlins	352
75. Surfacing a gypsum tile roof	352
76. Gypsum floor deck	353
77. Diagram showing Estrich kiln	356
78. Cross section of kiln for burning hydraulic gypsum	357
79. Laying a floor of hydraulic gypsum	360
80. Pouring the hydraulic plaster	361
81. Distributing the mortar	362
82. Tamping the mortar	362
83. Smoothing down the mortar	363
84. Ruined cloister of Walkenreed	364
85. Modern building using gypsum plaster	365
86. Relation between compressive strength and tensile strength	389
87. Tensile strength and gypsum content	389
88. Temperature and time of set	390
89. Effect of time of working on strength	410
90. Stages in the setting of calcined gypsum	410
91. Setting time of calcined gypsum	412
92. Expansion of calcined gypsum while setting	412

FIGURES	PAGE
93. Temperature changes in calcined gypsum while setting	415
94. Time intervals for initial and final set	415
95. Relation between water used and setting time	420
96. Relation of water used to viscosity	421
97. Effect of stirring on time of set	422
98. Effect of rate of stirring on time of set	423
99. Effect of temperature of water used in mixing on time of set	424
100. Sections showing loading test of gypsum composition floor	433
101. Tables showing deflection of gypsum floor	437
102. Plans showing measurements of gypsum composition floor	438
103. Curves showing deflection of supporting beams	439
104. Curves showing deflection of floor slab	440
105. Curves showing elongation of reinforcing cables	442
106. Plan showing cracks in test slab	443
107. Deformation of panels and beams	445
108. Diagrams showing reinforcement of gypsum beams	459
109. Diagrams showing pressure on gypsum beams	459
110. Spacing of reinforcement in gypsum beams	460
111. Curves showing amounts of reinforcement	463
112. Diagram showing shear in gypsum beams	464
113. Cross section of gypsum beam	465