



Iowa Research Online
The University of Iowa's Institutional Repository

Department of Occupational and Environmental Health Publications

5-1-2014

2,4-Di-chloro-1-iodo-6-nitro-benzene

Xueshu Li

University of Iowa

Sean Parkin

University of Kentucky

Hans-Joachim Lehmler

University of Iowa

DOI: <https://doi.org/10.1107/S1600536814008733>

Copyright © Li et al. 2014

Creative Commons License



This work is licensed under a [Creative Commons Attribution 4.0 License](https://creativecommons.org/licenses/by/4.0/).

Acta Crystallogr Sect E Struct Rep Online. 2014 May 1; 70(Pt 5): o607. Published online 2014 Apr 26. doi: [10.1107/S1600536814008733](https://doi.org/10.1107/S1600536814008733)

Comments

This work was supported by grants ES05605, ES013661 and ES017425 from the National Institute of Environmental Health Sciences, National Institutes of Health (NIEHS/NIH).

Hosted by [Iowa Research Online](https://www.lib-ir.uiowa.edu/). For more information please contact: lib-ir@uiowa.edu.

Acta Crystallographica Section E

Structure Reports

Online

ISSN 1600-5368

2,4-Dichloro-1-iodo-6-nitrobenzene

Xueshu Li,^a Sean Parkin^b and Hans-Joachim Lehmler^{a*}

^aThe University of Iowa, Department of Occupational and Environmental Health, UI Research Park, Iowa City, IA 52242-5000, USA, and ^bUniversity of Kentucky, Department of Chemistry, Lexington, KY 40506-0055, USA
Correspondence e-mail: hans-joachim-lehmler@uiowa.edu

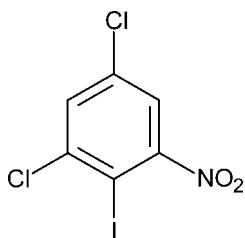
Received 9 April 2014; accepted 17 April 2014

Key indicators: single-crystal X-ray study; $T = 90$ K; mean $\sigma(\text{C}-\text{C}) = 0.009$ Å; R factor = 0.037; wR factor = 0.098; data-to-parameter ratio = 12.1.

In the crystal structure of the title compound, $\text{C}_6\text{H}_2\text{Cl}_2\text{INO}_2$, there are weak $\text{C}-\text{H}\cdots\text{Cl}$ interactions and $\text{I}\cdots\text{O}$ [3.387 (4) Å] close contacts. These interactions form sheets in the ac plane, with the closest contact between adjacent planes occurring between inversion-related nitro O atoms [3.025 (8) Å]. The molecule possesses mirror symmetry, with the halogen, N and C atoms all lying in the mirror plane. Hence, the dihedral angle between the benzene ring and the nitro group is 90° .

Related literature

For crystal structures of similar substituted nitrobenzenes, see: Li *et al.* (2012); Tahir *et al.* (2009). For information about polychlorinated biphenyls (PCBs) and their synthesis, see: Joshi *et al.* (2011); Lehmler *et al.* (2010); Lehmler & Robertson (2001). For the synthesis of the title compound, see: Sohn *et al.* (2003).



Experimental

Crystal data

 $\text{C}_6\text{H}_2\text{Cl}_2\text{INO}_2$ $M_r = 317.89$ Orthorhombic, $Pnma$ $a = 8.7760$ (5) Å $b = 6.8989$ (4) Å $c = 14.3518$ (8) Å $V = 868.93$ (9) Å³ $Z = 4$ Cu $K\alpha$ radiation $\mu = 34.30$ mm⁻¹ $T = 90$ K $0.13 \times 0.10 \times 0.04$ mm

Data collection

Bruker X8 Proteum diffractometer

Absorption correction: multi-scan

(SADABS; Sheldrick, 2008b)

 $T_{\min} = 0.052$, $T_{\max} = 0.216$

9625 measured reflections

862 independent reflections

827 reflections with $I > 2\sigma(I)$ $R_{\text{int}} = 0.082$

Refinement

 $R[F^2 > 2\sigma(F^2)] = 0.037$ $wR(F^2) = 0.098$ $S = 1.12$

862 reflections

71 parameters

H-atom parameters constrained

 $\Delta\rho_{\text{max}} = 0.67$ e Å⁻³ $\Delta\rho_{\text{min}} = -0.68$ e Å⁻³

Table 1

Hydrogen-bond geometry (Å, °).

$D-H\cdots A$	$D-H$	$H\cdots A$	$D\cdots A$	$D-H\cdots A$
$\text{C3}-\text{H3}\cdots\text{Cl2}^i$	0.95	2.77	3.718 (7)	179

Symmetry code: (i) $x - \frac{1}{2}, y, -z + \frac{1}{2}$.

Data collection: APEX2 (Bruker, 2006); cell refinement: SAINT (Bruker, 2006); data reduction: SAINT; program(s) used to solve structure: SHELXS97 (Sheldrick, 2008a); program(s) used to refine structure: SHELXL2013 (Sheldrick, 2008a); molecular graphics: XP in SHELXTL (Sheldrick, 2008a); software used to prepare material for publication: SHELXTL and CIFFIX (Parkin, 2013).

This work was supported by grants ES05605, ES013661 and ES017425 from the National Institute of Environmental Health Sciences, National Institutes of Health (NIEHS/NIH).

Supporting information for this paper is available from the IUCr electronic archives (Reference: LH5698).

References

- Bruker (2006). APEX2. Bruker AXS Inc., Madison, Wisconsin, USA.
Joshi, S. N., Vyas, S. M., Duffel, M. W., Parkin, S. & Lehmler, H.-J. (2011). *Synthesis*, pp. 1045–1054.
Lehmler, H.-J., Harrad, S. J., Huhnerfuss, H., Kania-Korwel, I., Lee, C. M., Lu, Z. & Wong, C. S. (2010). *Environ. Sci. Technol.* **44**, 2757–2766.
Lehmler, H.-J. & Robertson, L. W. (2001). *Chemosphere*, **45**, 137–143.
Li, X., Cao, L., Ruan, C., Ji, B. & Zhou, L. (2012). *Acta Cryst.* **E68**, o1500.
Parkin, S. (2013). CIFFIX. <http://xray.uky.edu/people/parkin/programs/ciffix>.
Sheldrick, G. M. (2008a). *Acta Cryst.* **A64**, 112–122.
Sheldrick, G. M. (2008b). SADABS. University of Göttingen, Germany.
Sohn, J., Kiburz, B., Li, Z., Deng, L., Safi, A., Pirrung, M. C. & Rudolph, J. (2003). *J. Med. Chem.* **46**, 2580–2588.
Tahir, M. N., Arshad, M. N., Khan, I. U. & Shafiq, M. (2009). *Acta Cryst.* **E65**, o535.

supplementary materials

Acta Cryst. (2014). E70, o607 [doi:10.1107/S1600536814008733]

2,4-Dichloro-1-iodo-6-nitrobenzene

Xueshu Li, Sean Parkin and Hans-Joachim Lehmler

1. Comment

The title compound was synthesized as a precursor for the preparation of chiral polychlorinated biphenyl (PCB) derivatives (Lehmler *et al.*, 2010) using the Suzuki-coupling reaction (Joshi *et al.*, 2011; Lehmler & Robertson, 2001). There are C3—H3···Cl2 ($x - 0.5, y, 0.5 - z$) interactions [$C3\cdots Cl2 = 3.718(7) \text{ \AA}$] that link the molecules into flat ribbons along the a axis. Between adjacent ribbons there are close contacts between iodine atoms and the nitro group O atoms, with I···O distances of $3.387(4) \text{ \AA}$. Each iodine atom is the same distance from both oxygen atoms because they are equivalent by virtue of the mirror plane. The linking of adjacent ribbons in the crystal structure give sheets in the ac plane (since the mirror plane is perpendicular to b). The closest contact between adjacent planes occurs between inversion ($1 - x, 1 - y, 1 - z$) related nitro O atoms [$3.025(8) \text{ \AA}$]. The distance between layers is simply half the b axis length. Viewed along the b axis, molecules appear to stack in an alternating fashion about a 2_1 screw ($-x, 0.5 + y, -z$), which places C11 of one molecule directly over the benzene ring of its screw-related counterpart.

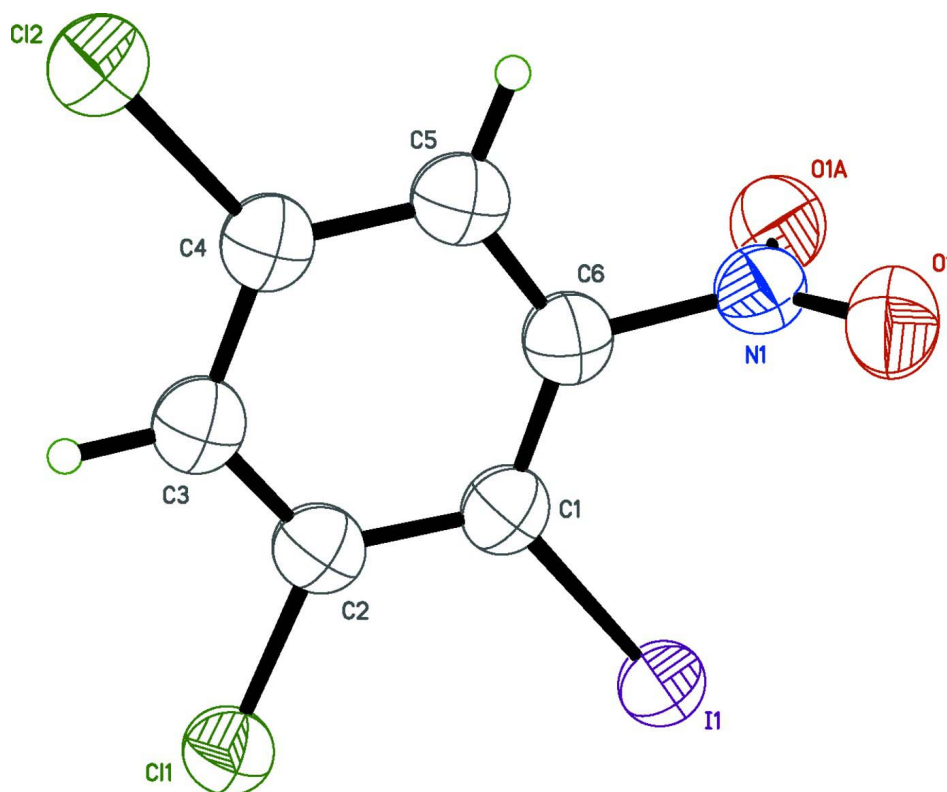
As a result of the symmetrical interaction between the iodines and both nitro group O atoms, the molecular structure of the title compound displayed a 90° dihedral angle between the plane of the nitro group and the plane of the benzene ring (which lies on the mirror plane). Only a few solid state structures of structurally related molecules with a 1-iodo-2-nitrobenzene moiety have been reported previously. The molecular structures of 4-chloro-1-iodo-2-nitrobenzene, a structurally related halogenated nitrobenzene with one iodo substituent *ortho* to the nitro group, display smaller dihedral angles between benzene ring and nitro group [$51.0(3)^\circ$ and $29.0(2)^\circ$] in the solid state (Tahir *et al.*, 2009). In contrast, 2,4-diiodo-3-nitroanisole, a nitrobenzene with two iodo substituents *ortho* to the nitro group, displayed dihedral angle of $88.0(3)^\circ$ (Li *et al.*, 2012), probably due to the steric demand of the two *ortho* iodo substituents. These differences demonstrate that packing effects can make significant contributions to the molecular structure (*i.e.* the dihedral angle between benzene ring and nitro group) in the solid state.

2. Experimental

The title compound was synthesized from 2,4-dichloro-6-nitroaniline by sequential diazotization and iodination with $\text{NaNO}_2\text{--HCl--KI}$ system (Sohn *et al.*, 2003). Crystals of the title compound suitable for crystal structure analysis were obtained by slow evaporation of a solution of the title compound in hexane-ethyl acetate (10:1).

3. Refinement

H atoms were found in difference Fourier maps, but subsequently included in the refinement using riding models, with constrained distances set to 0.95 \AA ($\text{C}_{\text{sp}^2}\text{H}$). $U_{\text{iso}}(\text{H})$ values were set to $1.2U_{\text{eq}}$ of the attached atom.

**Figure 1**

The molecular structure of the title compound, showing displacement ellipsoids drawn at the 50% probability level. Symmetry code: (A) $x, -y+1/2, z$.

2,4-Dichloro-1-iodo-6-nitrobenzene

Crystal data

$C_6H_2Cl_2INO_2$

$M_r = 317.89$

Orthorhombic, $Pnma$

$a = 8.7760$ (5) Å

$b = 6.8989$ (4) Å

$c = 14.3518$ (8) Å

$V = 868.93$ (9) Å³

$Z = 4$

$F(000) = 592$

Data collection

Bruker X8 Proteum

diffractometer

Radiation source: fine-focus rotating anode

Detector resolution: 5.6 pixels mm⁻¹

φ and ω scans

Absorption correction: multi-scan

(*SADABS*; Sheldrick, 2008b)

$T_{\min} = 0.052$, $T_{\max} = 0.216$

$D_x = 2.430$ Mg m⁻³

Cu $K\alpha$ radiation, $\lambda = 1.54178$ Å

Cell parameters from 6956 reflections

$\theta = 5.9$ – 67.7°

$\mu = 34.30$ mm⁻¹

$T = 90$ K

Rounded block, pale yellow

$0.13 \times 0.10 \times 0.04$ mm

9625 measured reflections

862 independent reflections

827 reflections with $I > 2\sigma(I)$

$R_{\text{int}} = 0.082$

$\theta_{\text{max}} = 68.0^\circ$, $\theta_{\text{min}} = 5.9^\circ$

$h = -10 \rightarrow 7$

$k = -8 \rightarrow 8$

$l = -13 \rightarrow 17$

Refinement

Refinement on F^2	Secondary atom site location: difference Fourier map
Least-squares matrix: full	Hydrogen site location: difference Fourier map
$R[F^2 > 2\sigma(F^2)] = 0.037$	H-atom parameters constrained
$wR(F^2) = 0.098$	$w = 1/[\sigma^2(F_o^2) + (0.0668P)^2 + 0.2013P]$
$S = 1.12$	where $P = (F_o^2 + 2F_c^2)/3$
862 reflections	$(\Delta/\sigma)_{\max} = 0.001$
71 parameters	$\Delta\rho_{\max} = 0.67 \text{ e } \text{\AA}^{-3}$
0 restraints	$\Delta\rho_{\min} = -0.68 \text{ e } \text{\AA}^{-3}$
Primary atom site location: structure-invariant direct methods	Extinction correction: <i>SHELXL2013</i> (Sheldrick, 2008a), $F_c^* = kF_c[1 + 0.001x F_c^2 \lambda^3 / \sin(2\theta)]^{-1/4}$
	Extinction coefficient: 0.0021 (4)

Special details

Experimental. Diffraction data were collected with the crystal at 90 K, which is standard practice in this laboratory for the majority of flash-cooled crystals.

A correction for radiation damage was included in the *SADABS* (Sheldrick, 2008b) run. This seems to have resulted in all the atomic displacement parameter ellipsoids looking more spherical than usual.

Geometry. All e.s.d.'s (except the e.s.d. in the dihedral angle between two l.s. planes) are estimated using the full covariance matrix. The cell e.s.d.'s are taken into account individually in the estimation of e.s.d.'s in distances, angles and torsion angles; correlations between e.s.d.'s in cell parameters are only used when they are defined by crystal symmetry. An approximate (isotropic) treatment of cell e.s.d.'s is used for estimating e.s.d.'s involving l.s. planes.

Fractional atomic coordinates and isotropic or equivalent isotropic displacement parameters (\AA^2)

	x	y	z	$U_{\text{iso}}^*/U_{\text{eq}}$
I1	0.10397 (4)	0.2500	0.70325 (2)	0.0776 (3)
Cl1	-0.18714 (15)	0.2500	0.54761 (10)	0.0783 (4)
Cl2	0.16156 (18)	0.2500	0.24439 (10)	0.0807 (4)
N1	0.4037 (5)	0.2500	0.5700 (4)	0.0797 (14)
O1	0.4576 (4)	0.4066 (6)	0.5918 (2)	0.0946 (9)
C1	0.1230 (7)	0.2500	0.5590 (5)	0.0739 (13)
C2	-0.0053 (7)	0.2500	0.5003 (5)	0.0753 (13)
C3	0.0065 (7)	0.2500	0.4060 (4)	0.0754 (13)
H3	-0.0828	0.2500	0.3686	0.090*
C4	0.1510 (8)	0.2500	0.3637 (5)	0.0740 (13)
C5	0.2811 (7)	0.2500	0.4179 (5)	0.0765 (13)
H5	0.3796	0.2500	0.3904	0.092*
C6	0.2624 (7)	0.2500	0.5133 (4)	0.0757 (13)

Atomic displacement parameters (\AA^2)

	U^{11}	U^{22}	U^{33}	U^{12}	U^{13}	U^{23}
I1	0.0812 (4)	0.0798 (4)	0.0718 (4)	0.000	0.00182 (13)	0.000
Cl1	0.0753 (8)	0.0786 (8)	0.0810 (8)	0.000	0.0026 (6)	0.000
Cl2	0.0828 (9)	0.0878 (9)	0.0715 (8)	0.000	0.0000 (6)	0.000
N1	0.079 (3)	0.091 (4)	0.070 (3)	0.000	0.003 (2)	0.000
O1	0.0929 (19)	0.097 (2)	0.0936 (18)	-0.0143 (17)	-0.0113 (16)	-0.0056 (17)
C1	0.081 (3)	0.071 (3)	0.069 (3)	0.000	-0.001 (2)	0.000
C2	0.074 (3)	0.067 (3)	0.084 (3)	0.000	0.002 (3)	0.000

C3	0.084 (3)	0.065 (3)	0.077 (3)	0.000	-0.004 (3)	0.000
C4	0.079 (3)	0.069 (3)	0.074 (3)	0.000	-0.004 (3)	0.000
C5	0.076 (3)	0.073 (3)	0.081 (3)	0.000	0.005 (3)	0.000
C6	0.076 (3)	0.073 (3)	0.078 (3)	0.000	-0.003 (3)	0.000

Geometric parameters (Å, °)

I1—C1	2.077 (7)	C1—C2	1.406 (9)
Cl1—C2	1.734 (7)	C2—C3	1.358 (9)
Cl2—C4	1.715 (7)	C3—C4	1.406 (10)
N1—O1	1.220 (4)	C3—H3	0.9500
N1—O1 ⁱ	1.220 (4)	C4—C5	1.381 (9)
N1—C6	1.484 (8)	C5—C6	1.379 (9)
C1—C6	1.388 (9)	C5—H5	0.9500
O1—N1—O1 ⁱ	124.6 (6)	C4—C3—H3	120.0
O1—N1—C6	117.7 (3)	C5—C4—C3	120.2 (6)
O1 ⁱ —N1—C6	117.7 (3)	C5—C4—Cl2	121.1 (5)
C6—C1—C2	114.9 (6)	C3—C4—Cl2	118.7 (5)
C6—C1—I1	122.9 (5)	C6—C5—C4	117.4 (6)
C2—C1—I1	122.2 (5)	C6—C5—H5	121.3
C3—C2—C1	122.4 (6)	C4—C5—H5	121.3
C3—C2—Cl1	117.4 (5)	C5—C6—C1	125.1 (6)
C1—C2—Cl1	120.2 (5)	C5—C6—N1	116.5 (5)
C2—C3—C4	119.9 (6)	C1—C6—N1	118.4 (5)
C2—C3—H3	120.0		
C6—C1—C2—C3	0.000 (2)	C4—C5—C6—C1	0.000 (2)
I1—C1—C2—C3	180.000 (1)	C4—C5—C6—N1	180.000 (1)
C6—C1—C2—Cl1	180.000 (1)	C2—C1—C6—C5	0.000 (2)
I1—C1—C2—Cl1	0.000 (1)	I1—C1—C6—C5	180.000 (1)
C1—C2—C3—C4	0.000 (2)	C2—C1—C6—N1	180.000 (1)
Cl1—C2—C3—C4	180.000 (1)	I1—C1—C6—N1	0.000 (2)
C2—C3—C4—C5	0.000 (2)	O1—N1—C6—C5	90.0 (5)
C2—C3—C4—Cl2	180.000 (1)	O1 ⁱ —N1—C6—C5	-90.0 (5)
C3—C4—C5—C6	0.000 (1)	O1—N1—C6—C1	-90.0 (5)
Cl2—C4—C5—C6	180.000 (1)	O1 ⁱ —N1—C6—C1	90.0 (5)

Symmetry code: (i) $x, -y+1/2, z$.

Hydrogen-bond geometry (Å, °)

$D-H\cdots A$	$D-H$	$H\cdots A$	$D\cdots A$	$D-H\cdots A$
C3—H3 \cdots Cl2 ⁱⁱ	0.95	2.77	3.718 (7)	179

Symmetry code: (ii) $x-1/2, y, -z+1/2$.