

Masthead Logo

---

University of Iowa Libraries Staff Publications

---

11-8-2016

# A Year in the Life of a Digital Humanities Librarian

Hannah Scates Kettler  
*University of Iowa*

Nicole White  
*University of Iowa*

Stephanie M. Blalock  
*University of Iowa*

---

Copyright © 2016 Hannah Scates Kettler, Nicole White, and Stephanie M. Blalock

Creative Commons License



This work is licensed under a [Creative Commons Attribution 4.0 License](https://creativecommons.org/licenses/by/4.0/).

Hosted by [Iowa Research Online](https://researchonline.iowa.edu/). For more information please contact: [lib-ir@uiowa.edu](mailto:lib-ir@uiowa.edu).

# A Year in the Life of a Digital Humanities Librarian

The University of Iowa – Digital Scholarship and Publishing Studio

Stephanie M. Blalock

Hannah Scates Kettler

Nikki JD White

# History and Organization

Who are we and how did we get here?



# Before merge

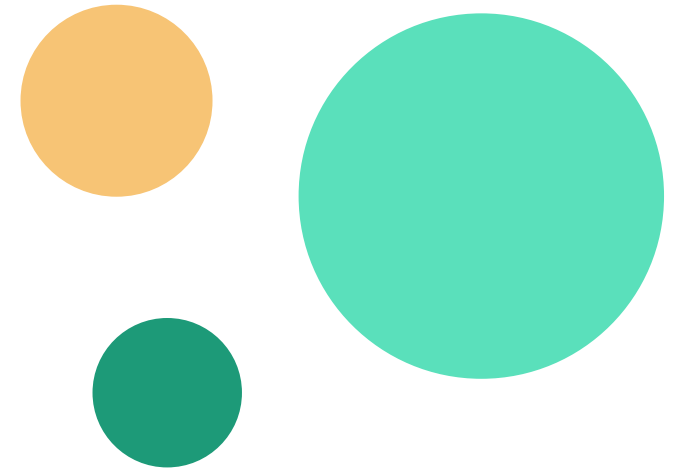
Office of the Provost

Digital Studio for  
Public Arts and  
Humanities

University Libraries

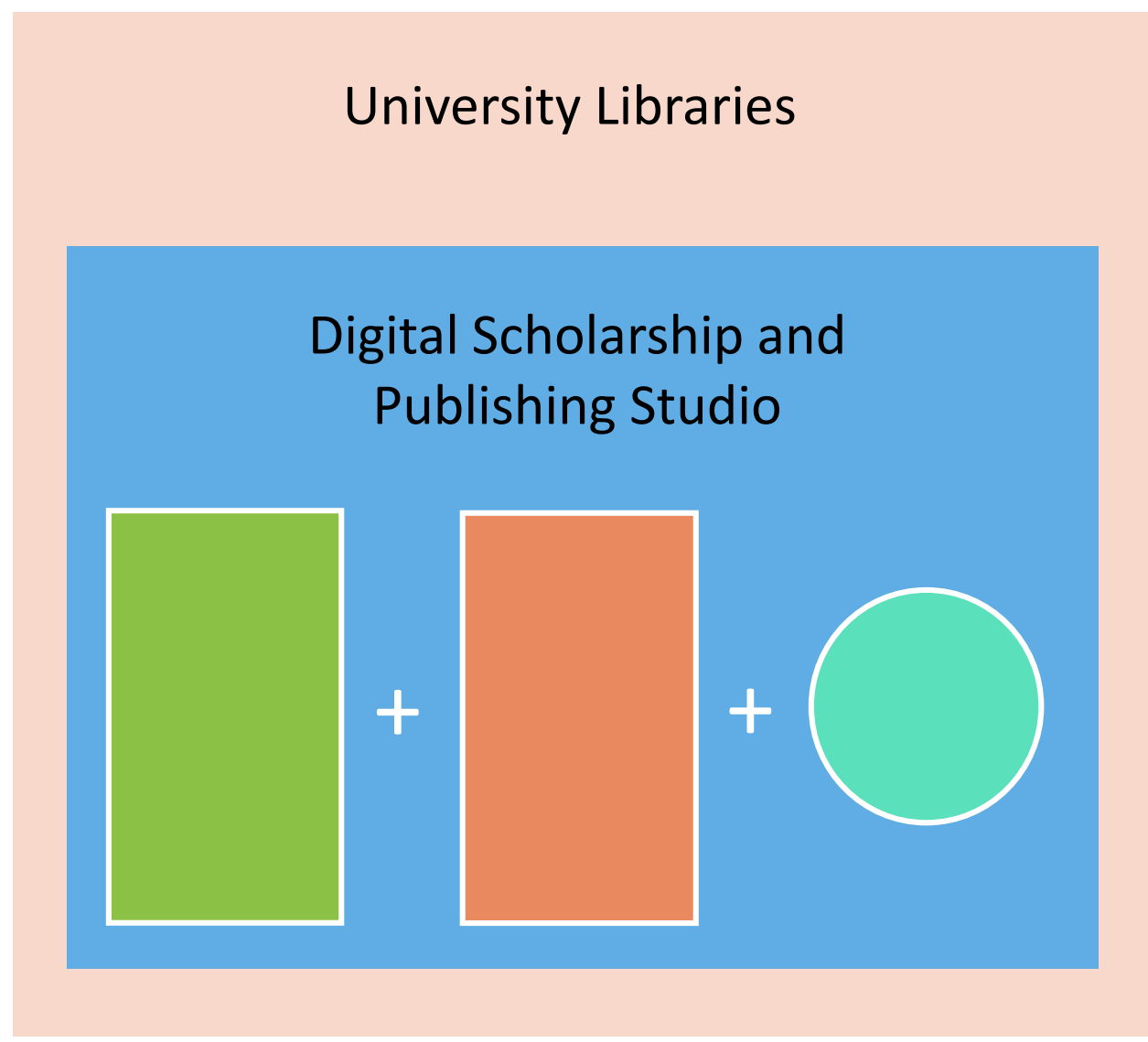
Digital Research  
and Publishing

Independent DH Projects



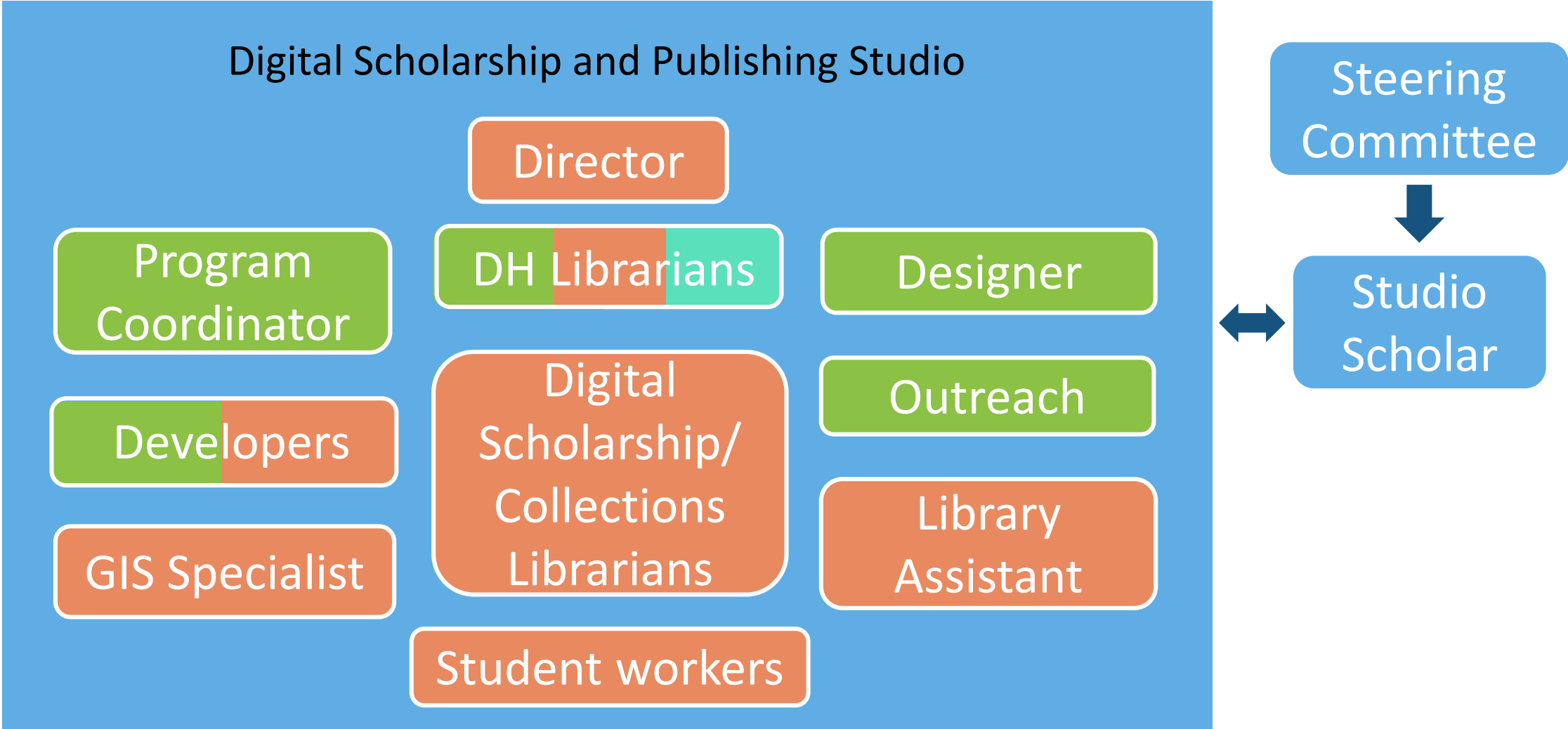


# Merge

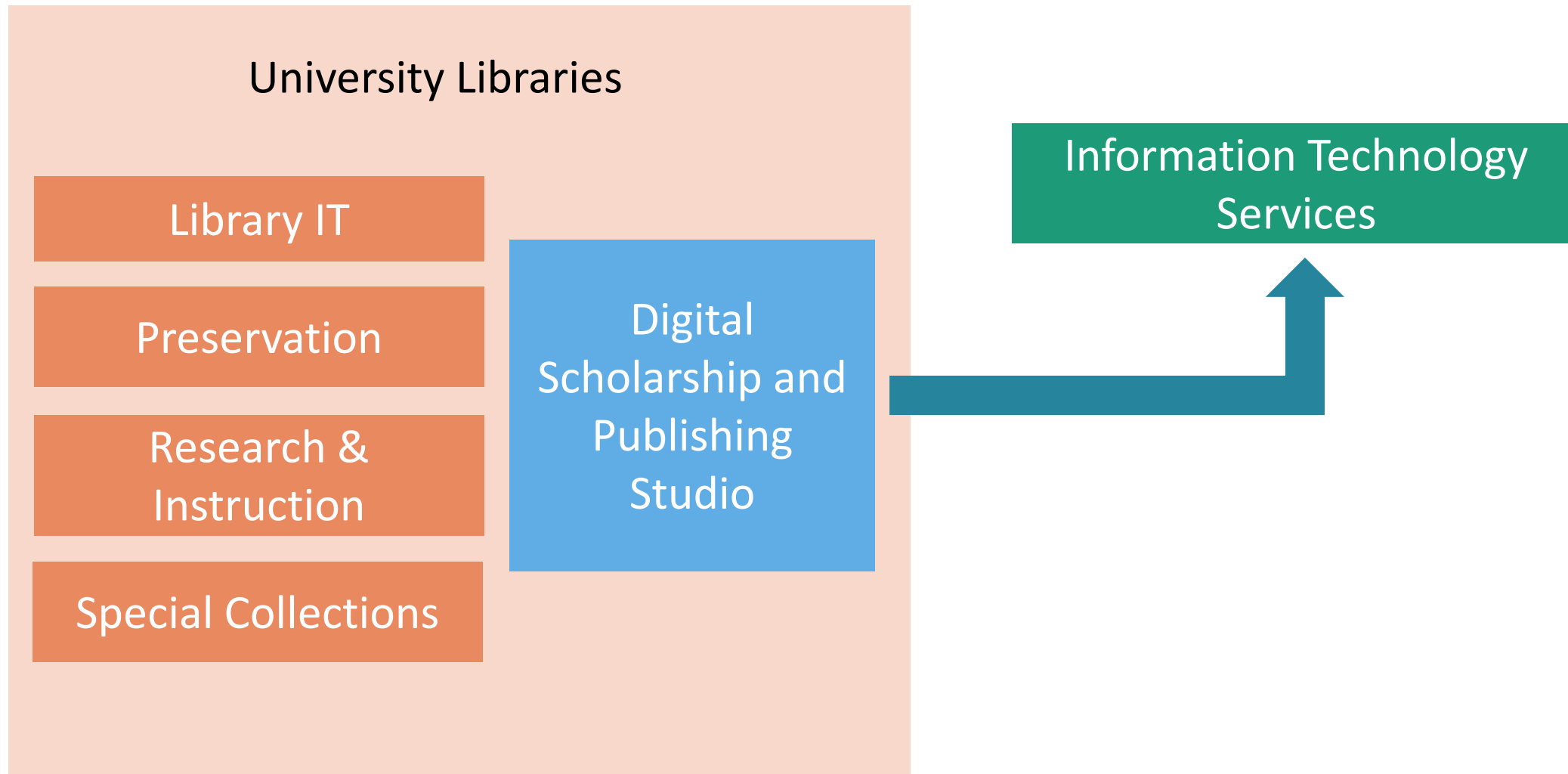




# New org chart



# Relationships to other orgs

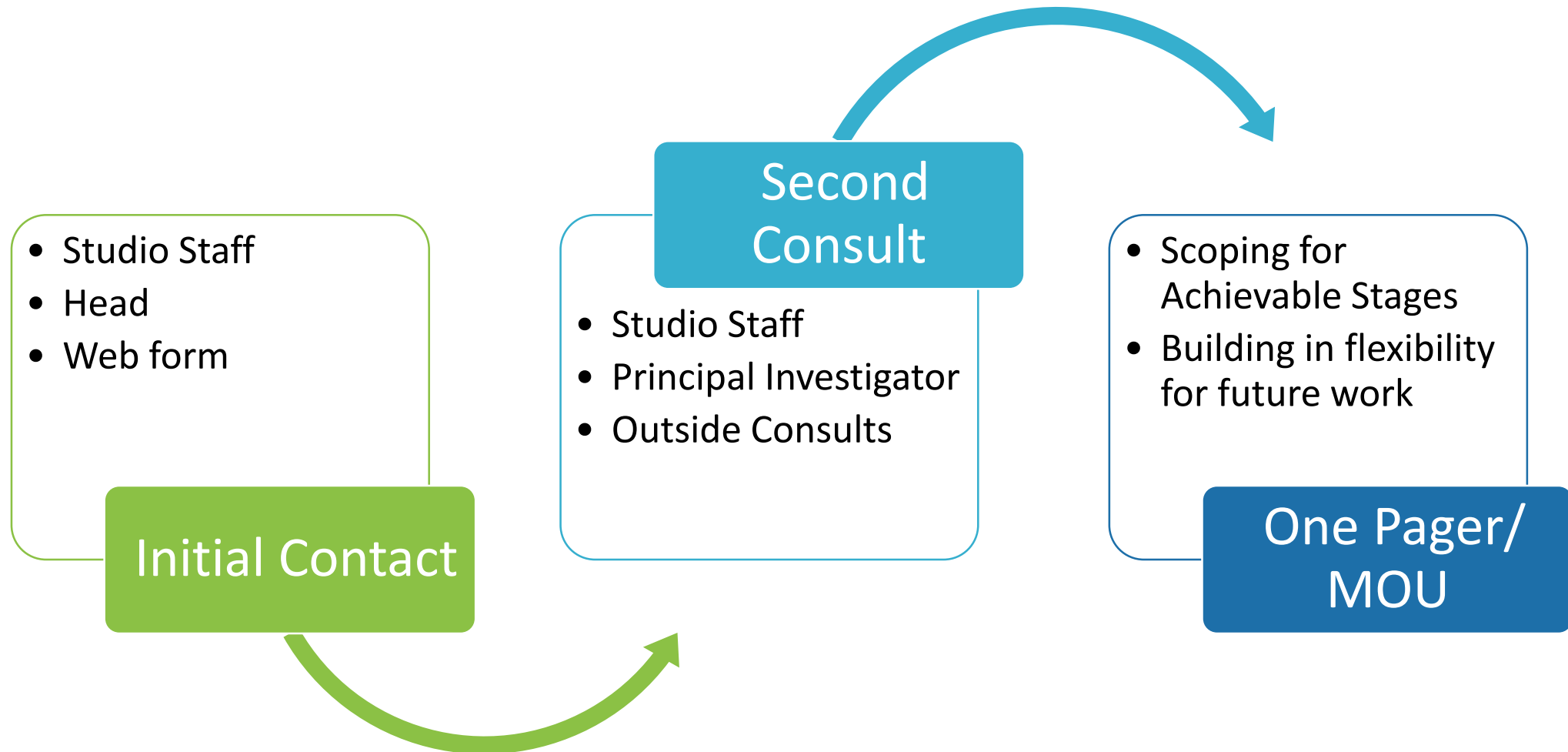


# Typical Workflow

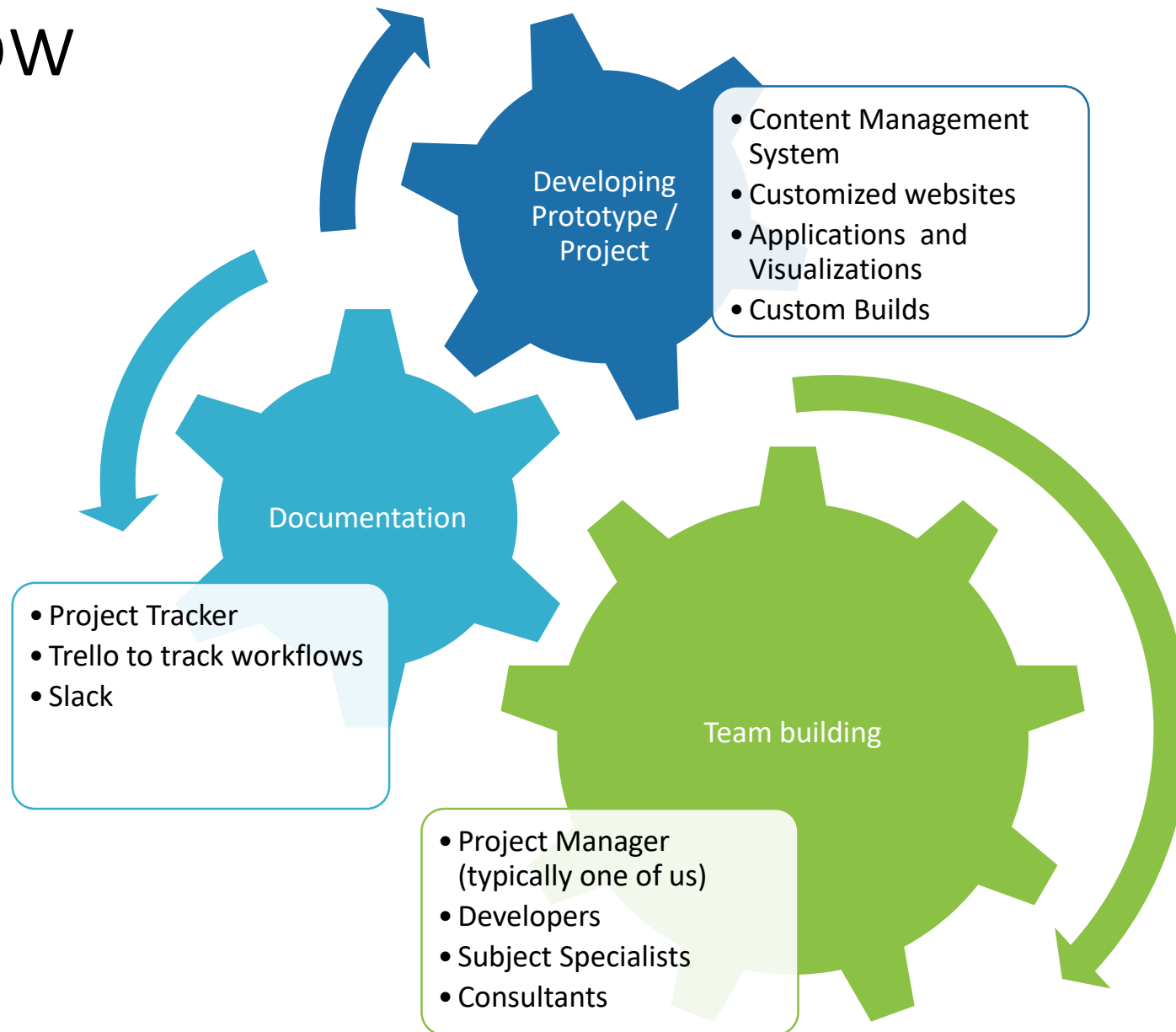
How do we do what we do?



# Workflow



# Workflow



# Achievements and Challenges

What have we learned?

# Achievements

- Cohesive, efficient workflows
- Communication between departments
- Process of consultation and MOUs
- Digital projects

# Projects

- [FLUXUS](#)
- [DIY History](#)
- [Coffee Zone](#)
- Walt Whitman's [Correspondence Project](#) (*Walt Whitman Archive*)

# Fluxus

ABOUT

BROWSE

HISTORY

RESOURCES

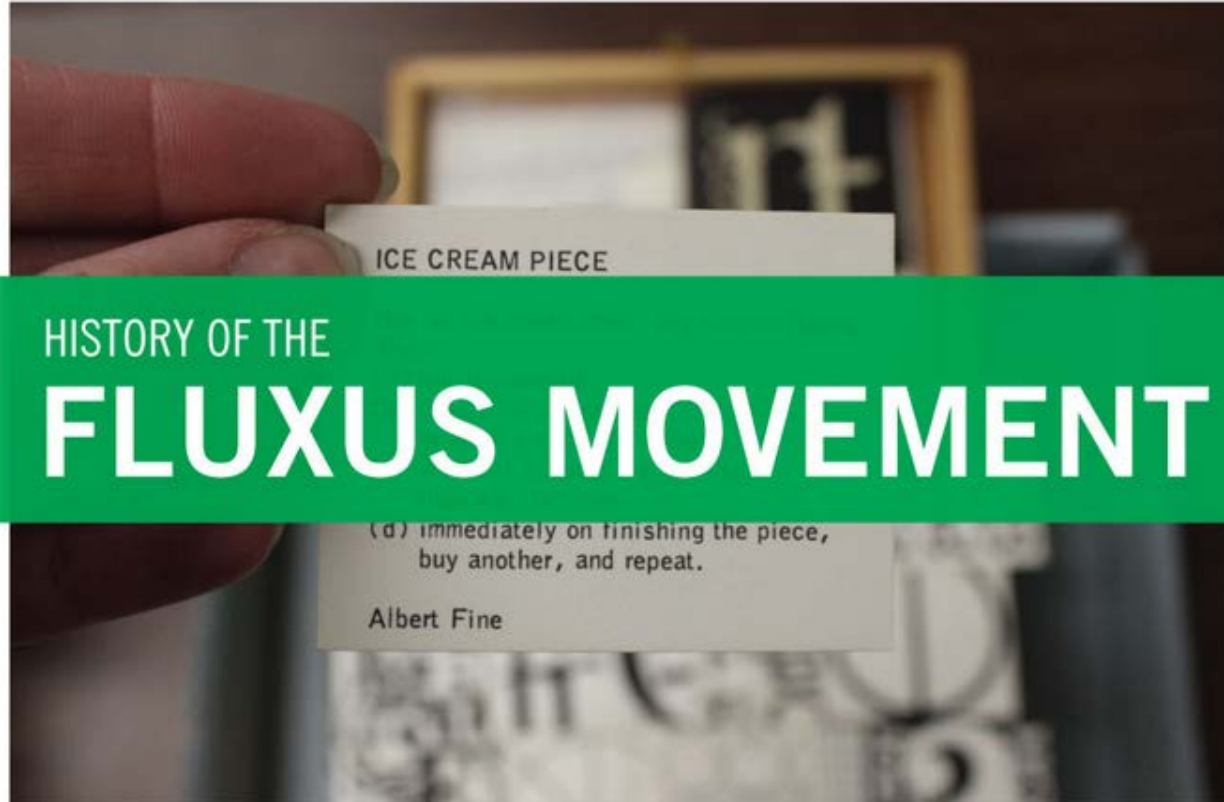
CONTACT

Enter your keywo



# FLUXUS

DIGITAL COLLECTION



# DIY History

DIY|History

LOGIN / ABOUT



72,522 pages transcribed!

## DIY History

DIY History lets you do it yourself to help make historic artifacts easier to use. Our digital library holds hundreds of thousands of items -- much more than library staff could catalog alone, so we're appealing to the public to help out by attaching text in the form of transcriptions, tags, and comments. Through "crowdsourcing," or engaging volunteers to contribute effort toward large-scale goals, these mass quantities of digitized artifacts become searchable, allowing researchers to quickly seek out specific information, general users to browse and enjoy the materials more easily. Please join us in preserving our past by keeping the historic record accessible -- one page or picture at a time.

# Coffee Zone



ABOUT

VIDEOS

coffee  
zone.



# Walt Whitman's Correspondence



The Walt Whitman Archive

Support the Archive

[Published Works](#) [In Whitman's Hand](#) [Life & Letters](#) [Commentary](#) [Resources](#) [Pictures & Sound](#) [About the Archive](#)

[Home](#) » [Life & Letters](#) » [Correspondence](#)

## Life & Letters

### Correspondence

#### Search Documents

#### View correspondence by era

[All \(1848-1889\)](#) | [Civil War \(1860-1866\)](#) | [Reconstruction \(1867-1876\)](#) | [Post Reconstruction \(1877-1887\)](#)

#### Viewing all documents (3184)

##### Sort documents:

[Date](#) | [Sender](#) | [Recipient](#)

[\(March 14, 1848\) Whitman, Thomas Jefferson to Whitman, Walter Sr.; Whitman, Louisa Van Velsor; Whitman, George Washington and others](#)

[\(March 27, 1848\) Whitman, Thomas Jefferson to Whitman, Walter Sr.; Whitman, Louisa Van Velsor; Whitman, George Washington and others](#)

[\(April 22, 1848\) Whitman, Thomas Jefferson to Whitman, Walter Sr.](#)

In this section, the *Whitman Archive* offers a growing amount of correspondence. We are gathering, transcribing, and encoding documents so as to compile the first complete record of Whitman's personal correspondence, both incoming and outgoing. In 2010, with generous support from the National Historical Publications and Records Commission (NHPRC) we made available Whitman's Civil War correspondence. We are now in the process of editing and publishing Whitman's two-way correspondence from the Reconstruction and post-Reconstruction years, also with NHPRC support. All letters from the Civil War period are currently available, and

# Challenges

- Appropriate scope for each project
- Multiple PIs on a project
- Shifting priorities of PIs

Thank you!

[lib.uiowa.edu/studio](http://lib.uiowa.edu/studio)

@TheStudio\_UI