



Engraving of Walt Whitman

Barry Moser

ISSN 0737-0679 (Print)

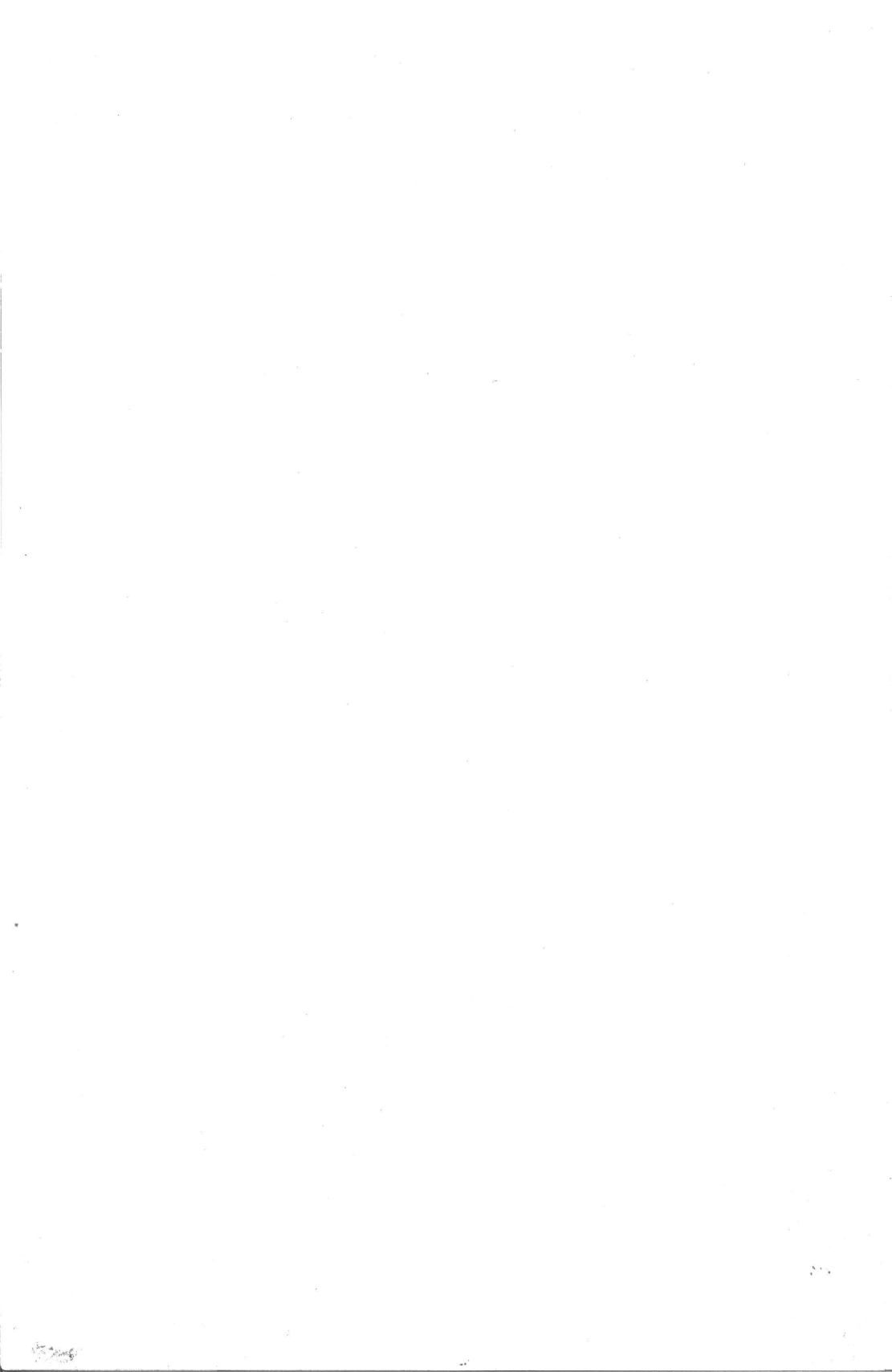
ISSN 2153-3695 (Online)

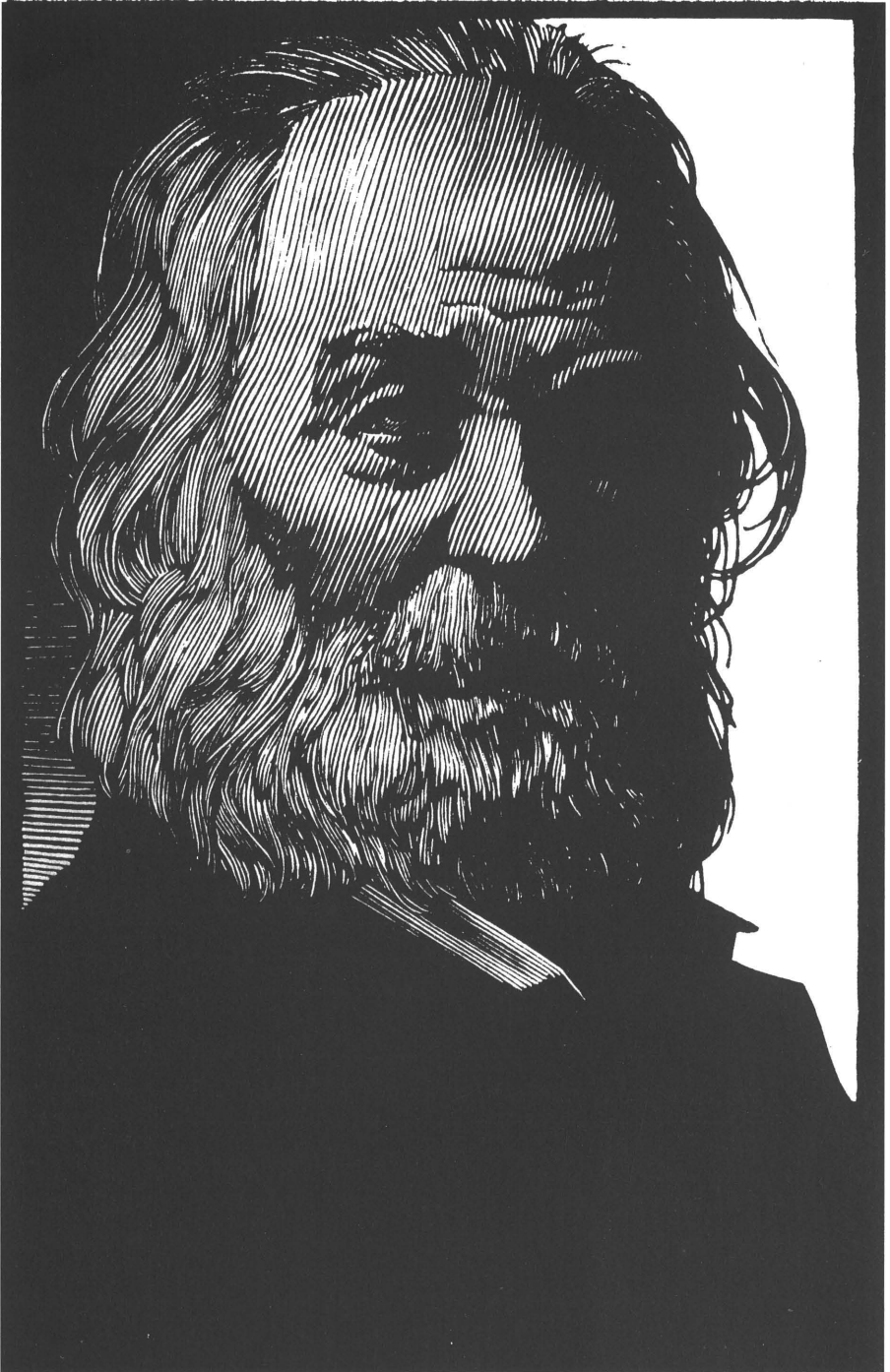
Copyright © 2003 Barry Moser

Recommended Citation

Moser, Barry. "Engraving of Walt Whitman." *Walt Whitman Quarterly Review* 20 (Winter 2003), 199-199. <https://doi.org/10.13008/2153-3695.1715>

This Back Matter and Back Cover is brought to you for free and open access by Iowa Research Online. It has been accepted for inclusion in *Walt Whitman Quarterly Review* by an authorized administrator of Iowa Research Online. For more information, please contact lib-ir@uiowa.edu.





Engraving of Walt Whitman by Barry Moser. This new relief engraving by the renowned artist Barry Moser will be included in his forthcoming *Shadow & Light: A Miscellany of Portraits: Artists, Architects, Writers, Composers and Friends: A Portfolio of Wood and Relief Engravings*, with an introduction by Ann Patchett and an afterword by the artist. Reprinted by permission of Barry Moser.