



WALT WHITMAN
QUARTERLY REVIEW

Volume 38
Number 3 (2021) *Special Double Issue: The
International Whitman*

Back Matter

ISSN 0737-0679 (Print)
ISSN 2153-3695 (Online)

Recommended Citation

"Back Matter." *Walt Whitman Quarterly Review* 38 (2021). [https://doi.org/10.13008/
0737-0679.2407](https://doi.org/10.13008/0737-0679.2407)

This Back Matter and Back Cover is brought to you for free and open access by Iowa Research Online. It has been accepted for inclusion in *Walt Whitman Quarterly Review* by an authorized administrator of Iowa Research Online. For more information, please contact lib-ir@uiowa.edu.

GUIDELINES FOR CONTRIBUTORS

GENERAL CONSIDERATIONS OF STYLE

Essays: Place the author's name two inches below the title and the institutional affiliation at the end of the essay. (Note: this information will be excised for peer review by the editor.)

Notes, Book Reviews, Bibliographies: These are configured like essays, except the author's name follows the work.

References: Follow *The MLA Style Sheet*, Second Edition. Mark references in the text with raised footnote numbers, not author-year citations in parentheses. Double-spaced endnotes should follow the essay on a new page headed "Notes." Do not use Latin abbreviations for repeated citations. Do not condense the names of publishers or titles. Make references complete so that a bibliography is unnecessary. When citing journal articles, give the volume number of the journal followed by the issue date in parentheses, followed by a comma, followed by the page number(s)—e.g., Joann P. Krieg, "Whitman and Modern Dance," *Walt Whitman Quarterly Review* 24 (Spring 2007), 208-209.

QUOTING AND CITING WALT WHITMAN'S WORK

When quoting from individual editions of *Leaves of Grass* (the 1855, 1856, 1860, 1867, 1870-1871, 1881, 1891), please use the facsimiles available online on the *Walt Whitman Archive*, and cite the edition, date, and page numbers, followed by "Available on the *Walt Whitman Archive* (www.whitmanarchive.org)." Do not list the URL of individual page images or the date accessed. After the initial citation, contributors should abbreviate as "LG" followed by the year of the edition and the page number (e.g., LG1855 15).

The standard edition of Whitman's work is the *Walt Whitman Archive* (www.whitmanarchive.org) in addition to *The Collected Writings of Walt Whitman*, twenty-two volumes published by the New York University Press under the general editorship of Gay Wilson Allen and Sculley Bradley, and supplemented with volumes published by the University of Iowa Press and Peter Lang. Citations and quotations from Whitman's writings not yet available on the *Walt Whitman Archive* should be keyed to the specific volumes in this edition.

After the initial citation, contributors should abbreviate the titles of the *Collected Writings* in the endnotes as follows:

- | | |
|-----|---|
| EPF | <i>The Early Poems and Fiction</i> , edited by Thomas L. Brasher (1963) |
| PW | <i>Prose Works 1892</i> , edited by Floyd Stovall. Vol. 1: <i>Specimen Days</i> (1963); Vol. 2: <i>Collect and Other Prose</i> (1964).
with a Composite Index (1977); Vol. 7, edited by Ted Genoways (2004). |
| DBN | <i>Daybooks and Notebooks</i> , edited by William White. 3 vols. (1978). |

- NUPM *Notebooks and Unpublished Prose Manuscripts*, edited by Edward F. Grier. 6 vols. (1984).
- Journ *The Journalism*, edited by Herbert Bergmann, Douglas A. Noverr, and Edward J. Recchia. Vol. 1: 1834-1846 (1998); Vol. 2: 1846-1848 (2003).
- Corr *The Correspondence*, edited by Edwin Haviland Miller. Vol. 1: 1842-1867 (1961); Vol. 2: 1868-1875 (1961); Vol. 3: 1876-1885 (1964); Vol. 4: 1886-1889 (1969); Vol. 5: 1890-1892 (1969); Vol. 6: A Supplement; Vol. 7: edited by Ted Genoways (2004).

For Whitman's correspondence, letters available on the *Walt Whitman Archive* take precedence over the *The Correspondence* edited by Edwin Haviland Miller. These should be cited in this format: Sender to recipient, month, day, year, followed by "Available on the *Walt Whitman Archive*, ID: xxx.00000."—e.g., Herbert Gilchrist to Walt Whitman, August 20, 1882. Available on the *Walt Whitman Archive*, ID: loc.02192.

Horace Traubel's *With Walt Whitman in Camden* (9 Vols) is available on the *Walt Whitman Archive*. After an initial citation followed by "Available on the *Walt Whitman Archive* (www.whitmanarchive.org)," it should be abbreviated *WWC*, followed by its volume and page number (e.g. *WWC* 3:45).

PROCEDURES FOR SUBMITTING WORK

To submit original work, please visit the *WWQR* website at: <http://ir.uiowa.edu/wwqr>.

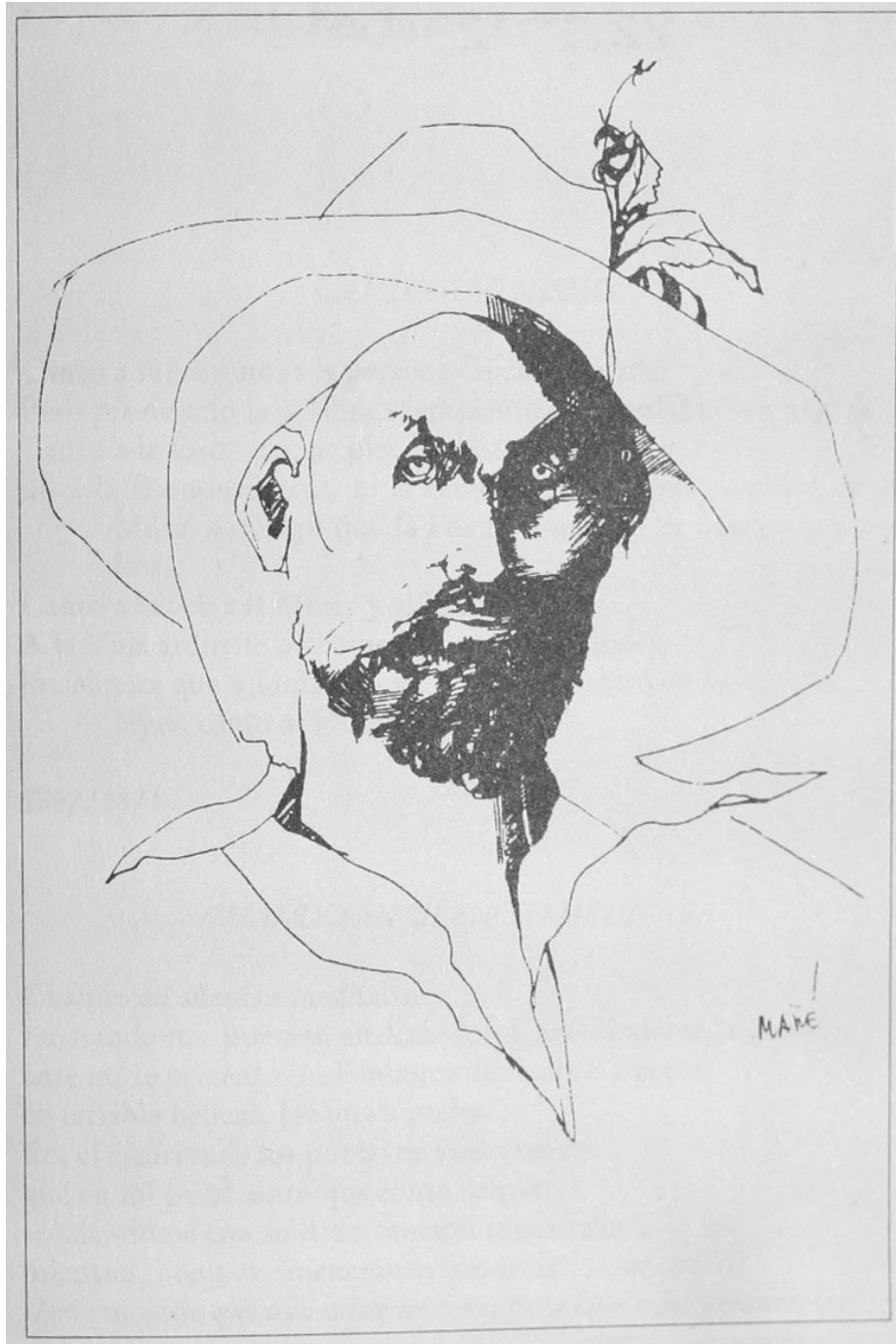
Address all correspondence to Editor, *Walt Whitman Quarterly Review*, The University of Iowa, 308 English Philosophy Bldg., Iowa City, IA, 52242-1492.

Our email address is wwqr@uiowa.edu.

ORDERING BACK ISSUES

Almost all print issues before volume 33 are available for purchase. Single issues are \$10.00 and double issues are \$15.00 (including shipping charges). When ordering please specify the volume number, issue number, and year of publication for each issue you would like to purchase. Please be aware that some issues are no longer available in print, though digital versions are accessible on ir.uiowa.edu/wwqr/.

Make checks payable to *Walt Whitman Quarterly Review* and mail your order to: *Walt Whitman Quarterly Review*, Department of English, The University of Iowa, 308 English-Philosophy Bldg., Iowa City, IA, 52242-1492.



The International Whitman: Whitman is transformed in many ways as he is absorbed into other languages and other cultures. This is a drawing of Whitman by the Uruguayan painter/translator Pablo Mañé Garzón, which he used to accompany his 1978 translation of Whitman, *Hojas de hierba*, published in Barcelona, Spain. See Matt Cohen, Nicole Gray, and Rey Rocha, “‘Poets to Come’: An Introduction to the Spanish Translations,” *Walt Whitman Archive* (whitmanarchive.org).

