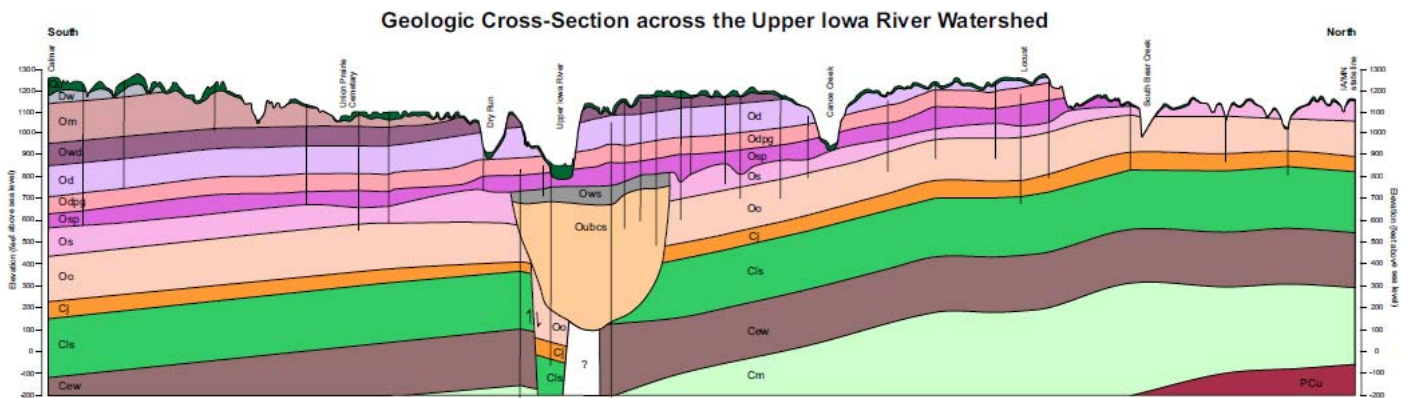


GEOLOGIC MAPPING FOR WATER QUALITY PROJECTS IN THE UPPER IOWA RIVER WATERSHED

Technical Information Series No. 54



**Iowa Geological and Water Survey
Robert D. Libra, State Geologist**

**Iowa Department of Natural Resources
Roger L. Lande, Director
September 2011**



Geologic Mapping for Water Quality Projects in the Upper Iowa River Watershed

**Iowa Geological and Water Survey
Technical Information Series 54**

C. F. Wolter, R. M. McKay, H. Liu, M. J. Bounk, R. D. Libra

Supported in part by the U.S. Geological Survey - National Cooperative
Geologic Mapping Program and the Iowa Department of Natural Resources –
Watershed Improvement Program through the US EPA Nonpoint Source
Pollution Program

September 2011

**Iowa Geological and Water Survey
Robert D. Libra, State Geologist**

**Iowa Department of Natural Resources
Roger L. Lande, Director**

TABLE OF CONTENTS

ABSTRACT	1
INTRODUCTION – GROUNDWATER AND WATERSHEDS	2
UPPER IOWA RIVER WATERSHED	2
BEDROCK GEOLOGY	4
Previous Geologic Mapping and Data Sources	4
Bedrock Topography (Elevation of the Bedrock Surface).	4
Bedrock Stratigraphy, Aquifers & Aquitards, and Map Units	5
Structure of the Bedrock Formations	7
Description of Map Units	8
KARST MAPPING	14
Karst and Water Quality.	14
Sinkhole and Spring Mapping Methods	15
Sinkhole and Spring Mapping Results	16
Losing Stream Mapping.	16
Geologic Associations	18
APPLICATION TO WATERSHED PLANNING	19
ACKNOWLEDGEMENTS	21
REFERENCES	22
APPENDIX A – Geologic Summary of Waterloo Creek Watershed, Allamakee County, Iowa	26
APPENDIX B – Geologic Summary of Silver Creek Watershed, Howard and Winneshiek counties, Iowa	32

LIST OF FIGURES

Figure 1. Location of the Upper Iowa River watershed	3
Figure 2. Bedrock topography, Upper Iowa River watershed	5
Figure 3. Stratigraphic sequence within the Upper Iowa River watershed	6
Figure 4. Elevation of the St. Peter Sandstone surface in the Upper Iowa River watershed.	7
Figure 5. Bedrock geologic map of the Upper Iowa River watershed	8
Figure 6. Geologic cross-section of the Upper Iowa River watershed	9
Figure 7. Elevation of the Decorah Shale in the Upper Iowa River watershed	11
Figure 8. Depth to the top of the Decorah Shale, Upper Iowa River watershed	12
Figure 9. Elevation of the top of the Maquoketa Formation, Upper Iowa River watershed.	13
Figure 10. Depth to the top of the Maquoketa Formation, Upper Iowa River watershed	13
Figure 11. Land-use, karst, and water quality relationships (illustration courtesy of the Southeast Minnesota Water Resources Board)	15
Figure 12. Locations of sinkholes in the Upper Iowa River watershed	17
Figure 13. Location of springs in the Upper Iowa River watershed	17
Figure 14. Comparison of NRCS, LiDAR/historical photography, and field-mapped sinkholes	18
Figure 15. Location of losing stream reaches in the Upper Iowa River watershed.	20

LIST OF TABLES

Table 1. Number and density of karst features by geologic unit	19
---	----